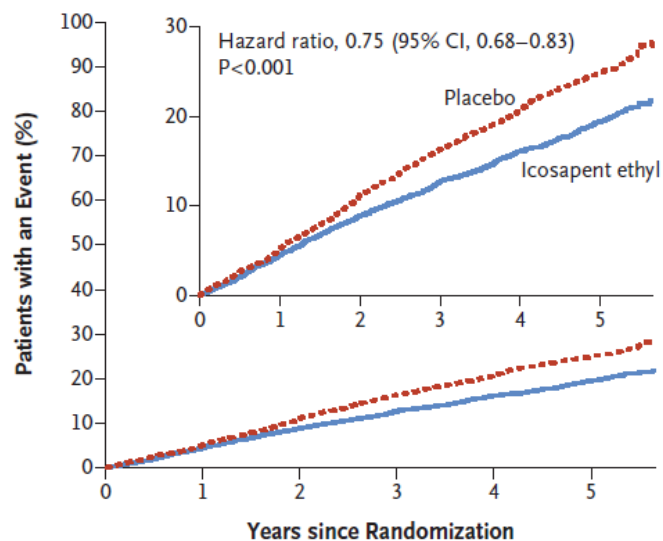


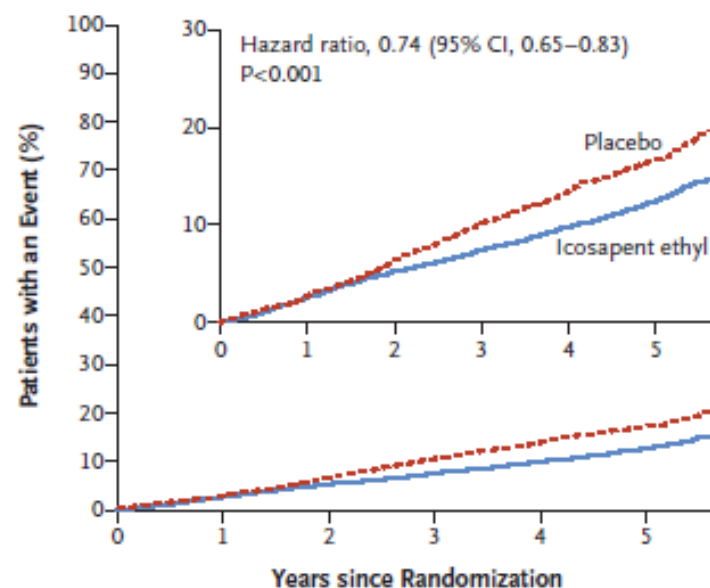
A Primary End Point



No. at Risk

Placebo	4090	3743	3327	2807	2347	1358
Icosapent ethyl	4089	3787	3431	2951	2503	1430

B Key Secondary End Point



No. at Risk

Placebo	4090	3837	3500	3002	2542	1487
Icosapent ethyl	4089	3861	3565	3115	2681	1562

Figure 1. Cumulative Incidence of Cardiovascular Events.

Panel A shows the Kaplan–Meier event curves for the primary efficacy composite end point of cardiovascular death, nonfatal myocardial infarction, nonfatal stroke, coronary revascularization, or unstable angina in the icosapent ethyl group and the placebo group, in a time-to-event analysis. Panel B shows the Kaplan–Meier event curves for the key secondary efficacy composite end point of cardiovascular death, nonfatal myocardial infarction, or nonfatal stroke in the two trial groups, in a time-to-event analysis. In each panel, the inset shows the same data on an expanded y axis. The curves were visually truncated at 5.7 years because a limited number of events occurred beyond that time point; all patient data were included in the analyses.