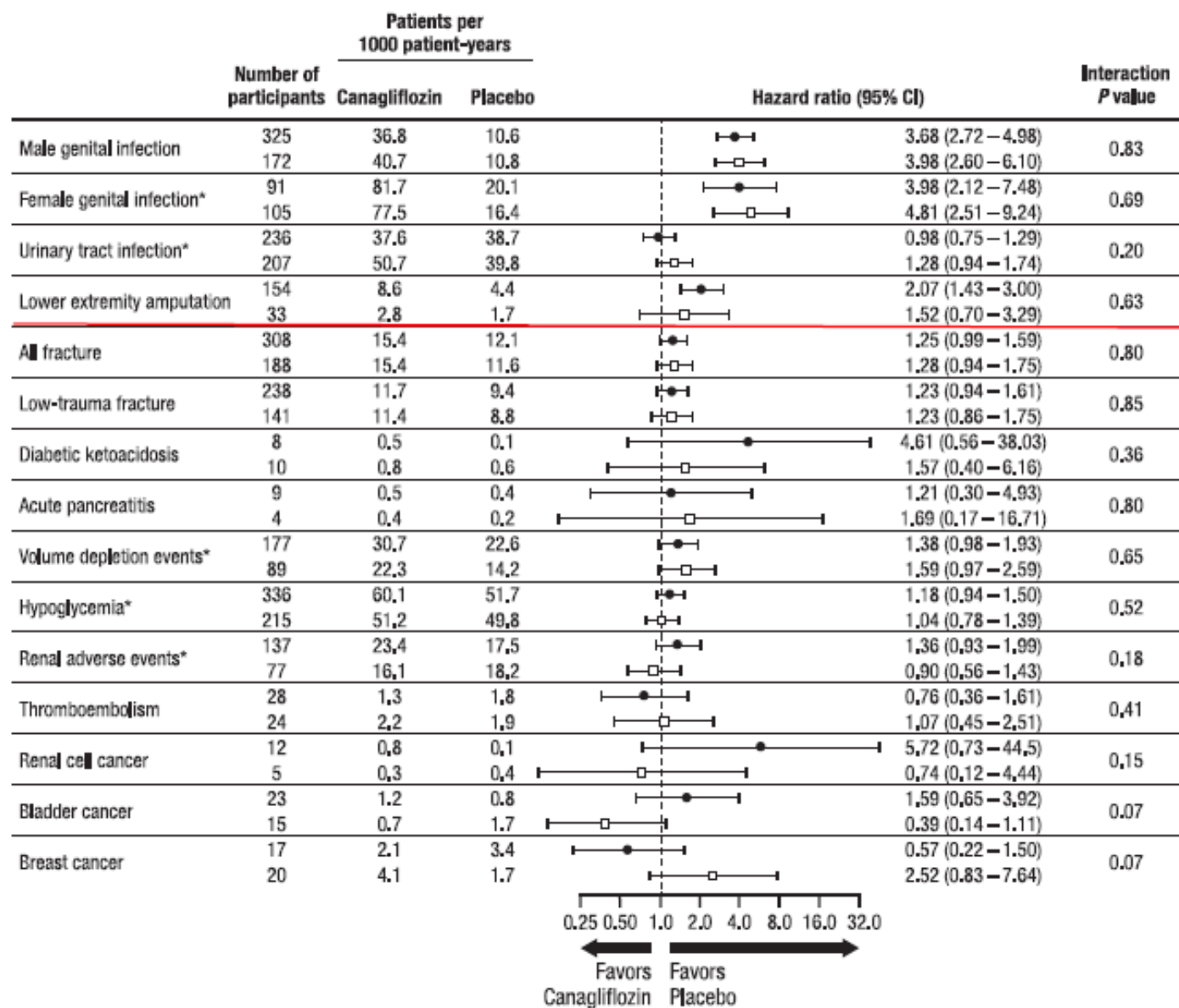


Table 1. Continued

Variable	Secondary Prevention			Primary Prevention			P Value (Secondary vs. Primary)
	Canagliflozin (n=3756)	Placebo (n=2900)	Total* (n=6656)	Canagliflozin (n=1447)	Placebo (n=2039)	Total (n=3486)	
Stroke	733 (19.5)	543 (18.7)	1276 (19.2)	6 (0.3)	9 (0.6)	15 (0.4)	
Carotid revascularization	47 (1.3)	32 (1.1)	79 (1.2)	0	0	0	
Surgical	42 (1.1)	21 (0.7)	63 (0.9)	0	0	0	
Percutaneous	7 (0.2)	12 (0.4)	19 (0.3)	0	0	0	
Unspecified	1 (<0.1)	0	1 (<0.1)	0	0	0	
Peripheral revascularization (surgical or percutaneous)	271 (7.2)	251 (8.7)	522 (7.8)	3 (0.1)	0	3 (0.1)	
Amputation	119 (3.2)	99 (3.4)	218 (3.3)	17 (0.8)	3 (0.2)	20 (0.6)	
Body mass index, kg/m ² , mean (SD)	31.8 (5.8)	31.7 (5.8)	31.8 (5.8)	32.2 (6.2)	32.5 (6.3)	32.3 (6.2)	<0.001†
Systolic BP, mmHg, mean (SD)	134.6 (16.0)	135.5 (16.3)	135.0 (16.1)	139.9 (14.8)	139.8 (14.2)	139.8 (14.5)	<0.001†
Diastolic BP, mmHg, mean (SD)	76.7 (9.6)	76.9 (9.7)	76.8 (9.6)	79.4 (9.5)	79.6 (9.5)	79.5 (9.5)	<0.001†
Glycohemoglobin, %, mean (SD)	8.2 (0.9)	8.2 (0.9)	8.2 (0.9)	8.3 (1.0)	8.3 (0.9)	8.3 (0.9)	0.30†
Total cholesterol, mmol/L, mean (SD)	4.3 (1.2)	4.3 (1.2)	4.3 (1.2)	4.5 (1.1)	4.5 (1.1)	4.5 (1.1)	<0.001†
Triglycerides, mmol/L, mean (SD)	2.0 (1.4)	2.0 (1.6)	2.0 (1.5)	2.0 (1.2)	2.0 (1.5)	2.0 (1.3)	0.29†
HDL cholesterol, mmol/L, mean (SD)	1.2 (0.3)	1.2 (0.3)	1.2 (0.3)	1.2 (0.3)	1.2 (0.3)	1.2 (0.3)	<0.001†
LDL cholesterol, mmol/L, mean (SD)	2.2 (0.9)	2.3 (0.9)	2.2 (0.9)	2.4 (0.9)	2.4 (0.9)	2.4 (0.9)	<0.001†
LDL/HDL cholesterol ratio, mean (SD)	2.0 (1.0)	2.0 (0.9)	2.0 (0.9)	2.1 (0.9)	2.1 (0.9)	2.1 (0.9)	0.001†
eGFR, mL/min/1.73 m ² , mean (SD)	75.6 (20.5)	75.3 (21.0)	75.5 (20.7)	78.6 (19.7)	78.0 (20.5)	78.3 (20.0)	<0.001†
Albumin-creatinine ratio, mg/g, median (IQR)#	12.4 (6.6–42.3)	12.1 (6.6–43.4)	12.2 (6.6–42.4)	12.3 (6.8–40.0)	12.4 (6.6–45.2)	12.3 (6.7–40.7)	0.81**
Normoalbuminuria, n (%)	2592 (69.7)	2008 (69.9)	4600 (69.8)	1420 (70.3)	987 (69.4)	2407 (70.0)	0.67††
Microalbuminuria, n (%)	863 (23.2)	610 (21.2)	1473 (22.3)	459 (22.7)	334 (23.5)	793 (23.0)	
Macroalbuminuria, n (%)	266 (7.1)	253 (8.7)	519 (7.9)	140 (6.9)	101 (7.1)	241 (7.0)	

下肢切断は一次予防の方が多いようです。

● Secondary prevention □ Primary prevention



一次予防と二次予防ともに服用で若干下肢切断が多いようです。

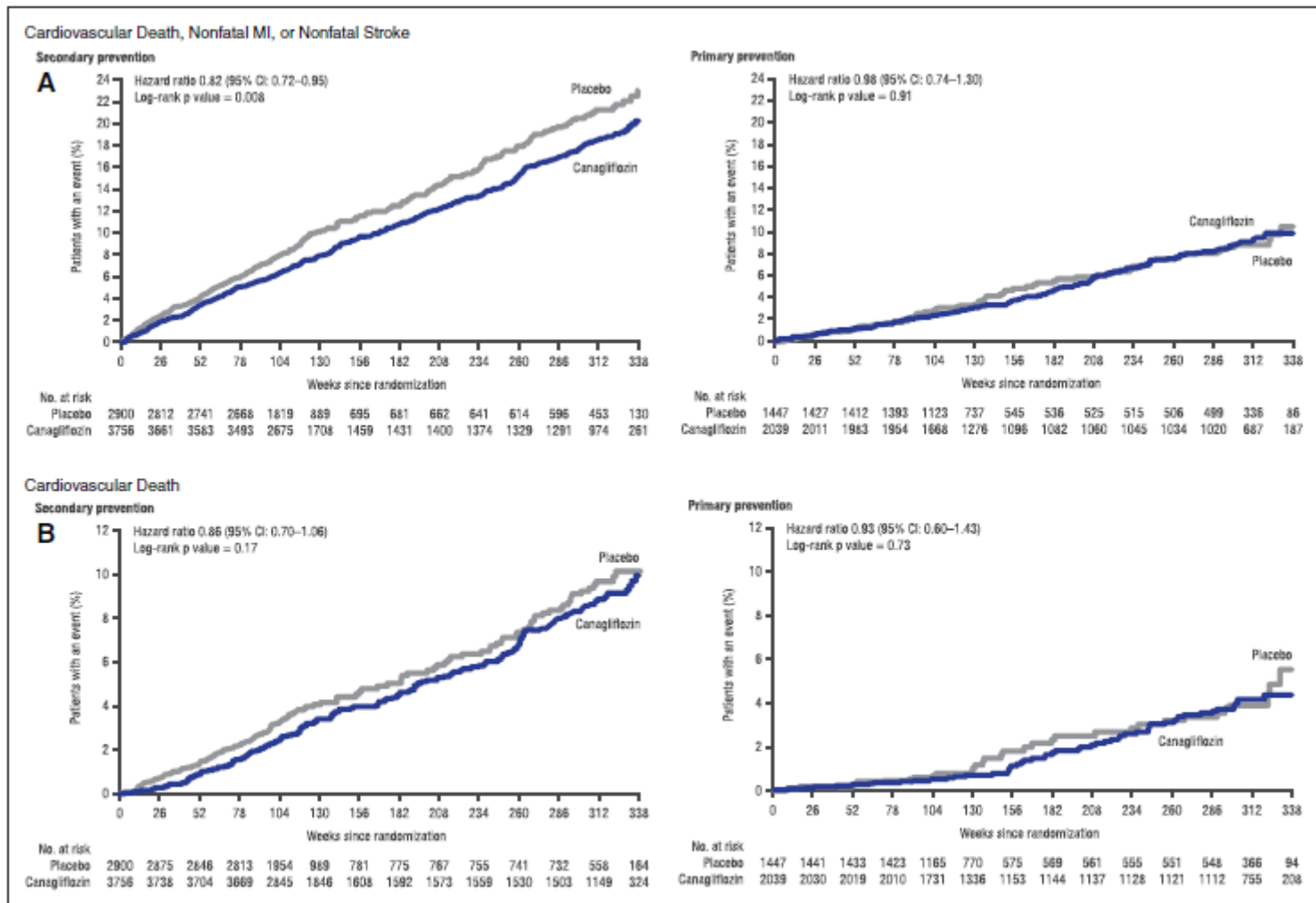


Figure 2. Effects of canagliflozin and placebo on cardiovascular and renal outcomes by primary and secondary prevention cohorts in the CANVAS Program.

CANVAS indicates Canagliflozin Cardiovascular Assessment Study; CI, confidence interval; MI, myocardial infarction; and eGFR, estimated glomerular filtration rate.

二次予防の方にカナグルの効果が出ています。

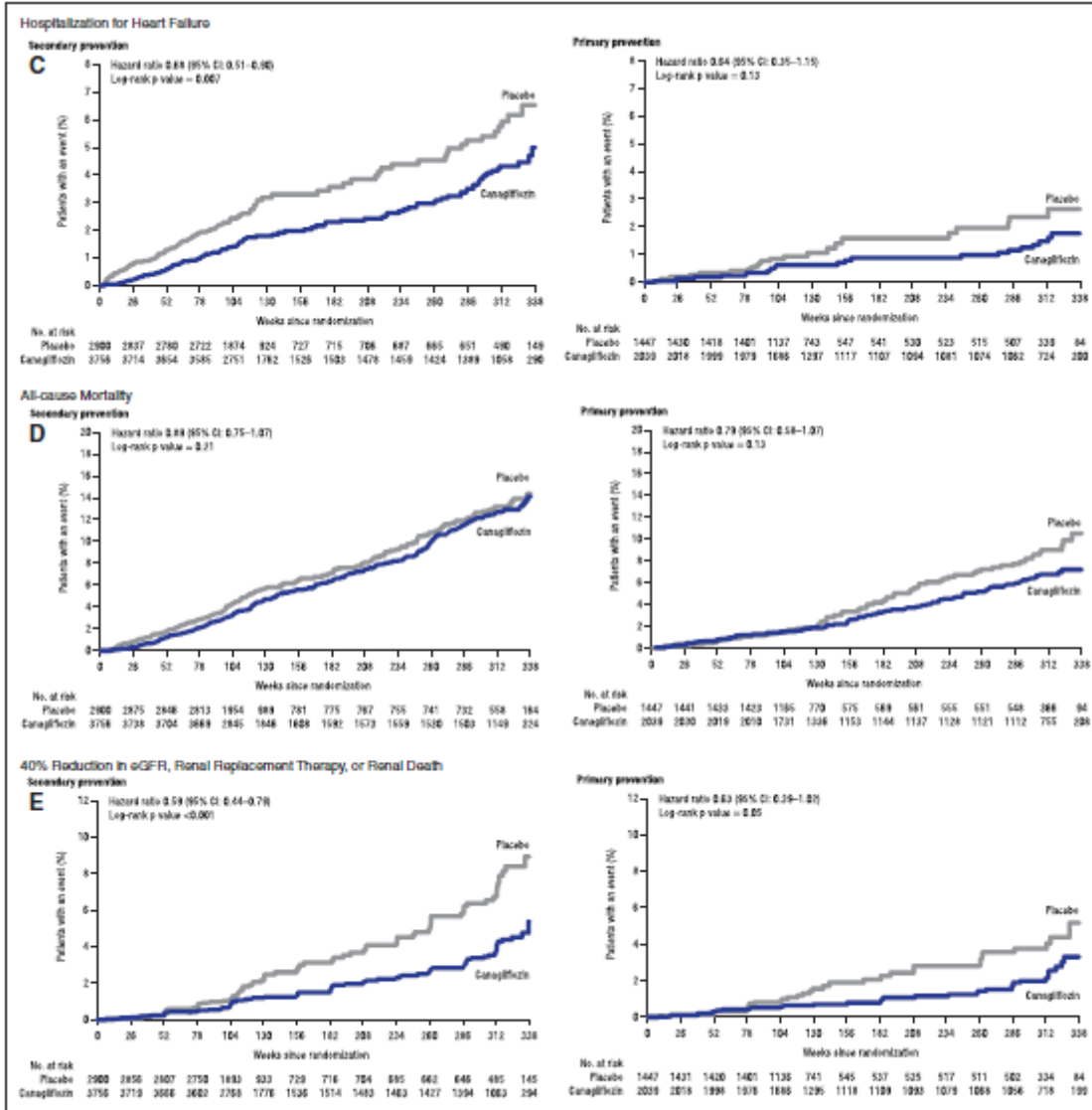


Figure 2 Continued.

腎保護作用においては一次と二次ともに効果が上がっています。