

**Table 1 | Summary of patients' characteristics and outcomes related to each episode of urinary tract infection (UTI). Values are numbers (percentages) unless stated otherwise**

Characteristics	No with UTI (n=312 896)	Immediate antibiotics (n=271 070)	Deferred antibiotics (n=19 292)	No antibiotics (n=22 534)	P value
Mean (SD) age (years)	76.9 (9.2)	76.3 (9.1)	79.1 (9.2)	79.3 (9.5)	
Age group (years):					
65-74	136 175 (43.5)	122 458 (45.2)	6402 (33.2)	7315 (32.5)	<0.001
75-84	107 485 (34.3)	92 856 (34.3)	6881 (35.7)	7748 (34.4)	
≥85	69 236 (22.1)	55 756 (20.6)	6009 (31.1)	7471 (33.1)	
Sex:					
Women	246 630 (78.8)	217 843 (80.4)	13 657 (70.8)	15 130 (67.1)	<0.001
Men	66 266 (21.2)	53 227 (19.6)	5635 (29.2)	7404 (32.9)	
Symptoms within 30 days before UTI diagnosis†:	23 502 (7.5)	19 172 (7.1)	2021 (10.5)	2309 (10.2)	
Enuresis	13 (0.01)	10 (76.9)	3 (23.1)	0	<0.001
Offensive urine	50 (0.02)	43 (86)	5 (10)	2 (4)	
Urgency	397 (0.1)	348 (87.7)	23 (5.8)	26 (6.5)	
Malaise	688 (0.2)	527 (76.6)	69 (10.0)	92 (13.4)	
Fatigue	694 (0.2)	607 (87.5)	39 (5.6)	48 (6.9)	
Confusion	1459 (0.5)	895 (61.3)	241 (16.5)	323 (22.1)	
Haematuria	2065 (0.7)	1621 (78.5)	205 (9.9)	239 (11.6)	
Incontinence	2159 (0.7)	1783 (82.6)	194 (9.0)	182 (8.4)	
Micturition frequency	3682 (1.2)	3151 (85.6)	261 (7.1)	270 (7.3)	
Dysuria	4158 (1.3)	3411 (82.0)	398 (9.6)	349 (8.4)	
Pain*	9604 (3.1)	7896 (82.2)	746 (7.8)	962 (10.0)	
Outcome:					
No (%) with bloodstream infection (95% CI)	1539 (0.5; 0.5 to 0.5)	479 (0.2; 0.1 to 0.2)	413 (2.2; 1.9 to 2.4)	647 (2.9; 2.7 to 3.1)	<0.001
No (%) admitted to hospital (95% CI)	51 261 (16.4, 16.2 to 16.5)	40 022 (14.8, 14.6 to 14.9)	5165 (26.8, 26.2 to 27.4)	6074 (27.0, 26.4 to 27.5)	<0.001
Mean (SD) length of stay (days)	7.1 (15.0)	6.3 (14.0)	7.7 (13.2)	12.1 (20.9)	<0.001
No (%) of deaths at 60 days (95% CI)	6193 (2.0, 1.9 to 2.0)	4431 (1.6, 1.6 to 1.7)	545 (2.8, 2.6 to 3.1)	1217 (5.4, 5.1 to 5.7)	<0.001

症状の欄で疼痛(排尿痛)が無い場合に治療が遅れています。  
倦怠感、尿失禁も注意が必要です。

バクタ

Table 2 | Distribution of antibiotics prescriptions among participants prescribed immediate treatment during their index visit for a urinary tract infection (UTI)

Antibiotics	No (%) (n=271 070)
Trimethoprim	148 333 (54.7)
Nitrofurantoin	51 745 (19.1)
Cephalosporins	31 090 (11.5)
Amoxicillin/clavulanic acid	25 616 (9.4)
Quinolones	11 995 (4.4)
Pivmecillinam	1084 (0.4)
Macrolides	747 (0.3)
Penicillinase resistant penicillins	323 (0.1)
Benzylpenicillin and phenoxymethylpenic	70 (0.03)
Aminoglycosides	27 (0.01)
Clindamycin	3 (<0.01)
Carbapenems	3 (<0.01)
Polymyxin	1 (<0.01)

英国ではバクタが頻用されています。

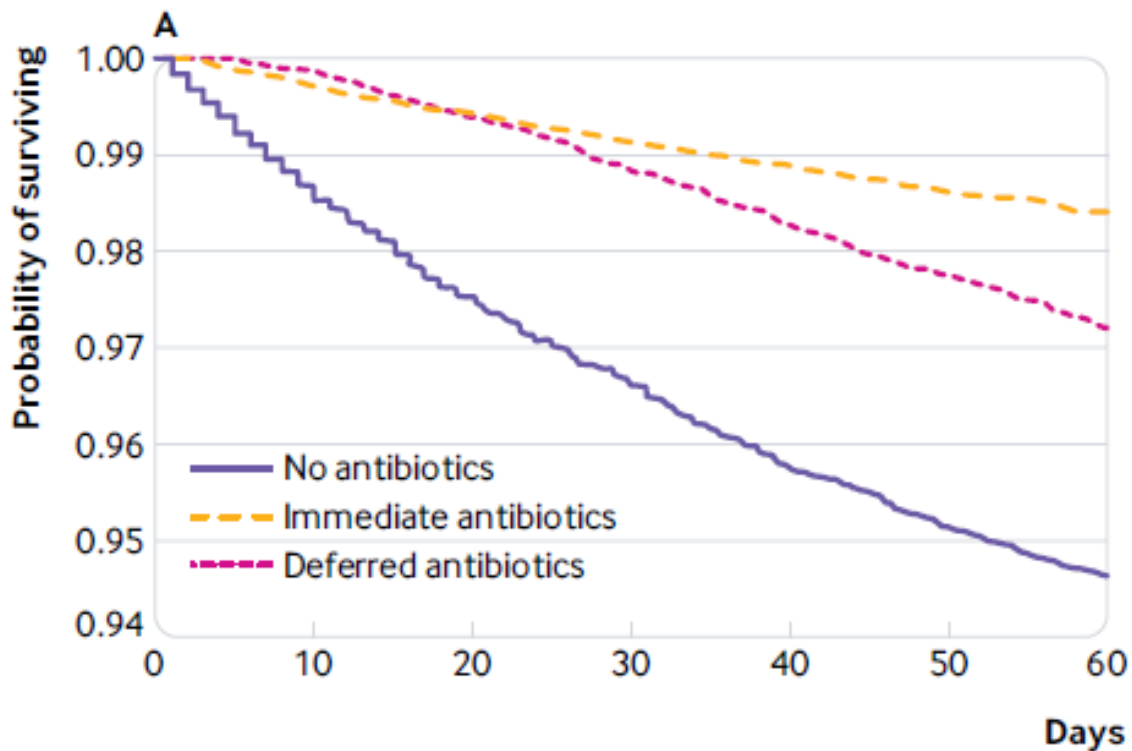
本院では再発性の場合に検討していますが、第一選択もありでしょうか？

Table 5 | Care pathway of each episode of urinary tract infection (UTI) experienced by older adults with a diagnosis in primary care. Values are numbers (percentages, 95% confidence intervals) unless stated otherwise

Variables	No of participants	Single visit to GP	Multiple visits to GP	Hospital admission including death within 60 days	P value
Antibiotic exposure*:					
No antibiotics	22 534 (7.2; 7.1 to 7.3)	14 722 (65.33; 64.71 to 65.95)	1 175 (5.2; 4.9 to 5.5)	6 637 (29.5; 28.9 to 30.1)	<0.001
Antibiotics*	290 362 (92.8; 92.7 to 92.9)	124 637 (42.9; 42.7 to 43.1)	118 189 (40.7; 40.5 to 40.9)	47 536 (16.4; 16.2 to 16.5)	
Sex:					
Men	66 266 (21.2; 21.0 to 21.3)	24 561 (37.1; 36.7 to 37.4)	23 640 (35.7; 35.3 to 36.0)	18 065 (27.3; 26.9 to 27.6)	<0.001
Women	246 630 (78.8; 78.7 to 79.0)	114 798 (46.6; 46.4 to 46.7)	95 724 (38.8; 38.6 to 39.0)	36 108 (14.6; 14.5 to 14.8)	
Age group (years):					
65-74	136 175 (43.5; 43.4 to 43.7)	66 972 (49.2; 48.9 to 49.5)	51 336 (37.7; 37.4 to 38.0)	17 867 (13.1; 12.9 to 13.3)	<0.001
75-84	107 485 (34.4; 34.2 to 34.5)	45 909 (42.7; 42.4 to 43.0)	41 427 (38.5; 38.3 to 38.83)	20 149 (18.8; 18.5 to 19.0)	
≥85	69 236 (22.1; 22.0 to 22.3)	26 478 (38.2; 37.9 to 38.6)	26 601 (38.4; 38.1 to 38.8)	16 157 (23.3; 23.02 to 23.7)	
Total	312 896	139 359 (44.5; 44.4 to 44.7)	119 364 (38.2; 38.0 to 38.3)	54 173 (17.3; 17.2 to 17.5)	

\*Includes deferred and immediate antibiotic approaches.

85歳以上では死亡を含めた入院率が急に増加しており注意が必要な層です。



**No at risk**

No antibiotics

22 534 22 236 21 978 21 783 21 582 21 446 21 327

Immediate antibiotics

271 070 270 350 269 498 268 769 268 013 267 360 266 709

Deferred antibiotics

19 292 19 262 19 176 19 075 18 963 18 860 18 754