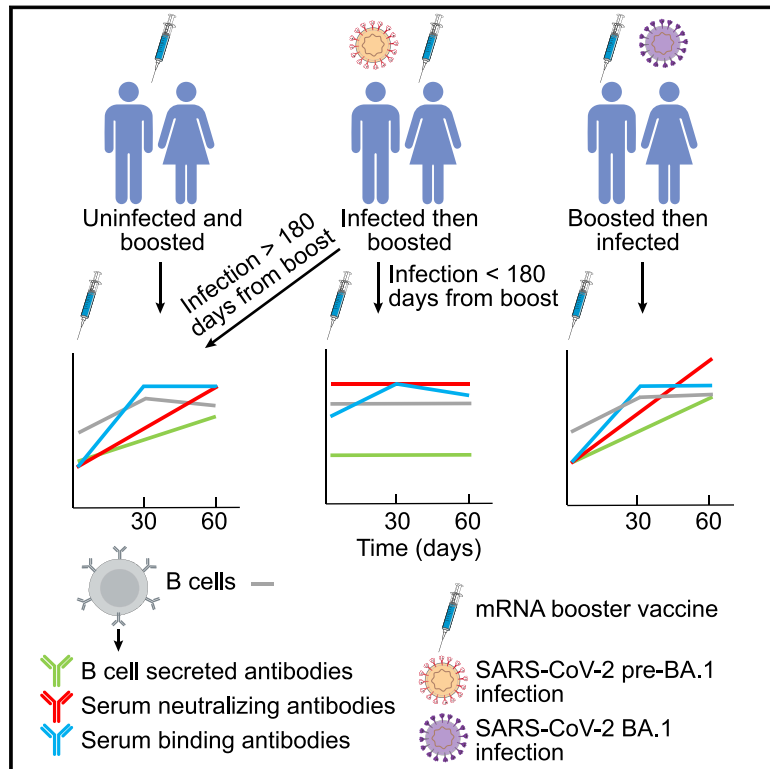


# Interval between prior SARS-CoV-2 infection and booster vaccination impacts magnitude and quality of antibody and B cell responses

## Graphical abstract



## Authors

Clarisa M. Buckner, Lela Kardava, Omar El Merhebi, ..., Anthony S. Fauci, Tae-Wook Chun, Susan Moir

## Correspondence

smoir@niaid.nih.gov

## In brief

For COVID-19 mRNA vaccines, immunization with a booster dose elicits robust antibody and B cell responses that are further increased if a breakthrough infection occurs after vaccination. In contrast, when infection occurs prior to booster vaccination, antibody and B cell responses are muted closer to the infection time and achieve better levels as the time interval between infection and vaccination increases.

## Highlights

- Pre-boost SARS-CoV-2 antibodies and B cells are elevated by prior infection
- Post-boost SARS-CoV-2 antibodies and B cells are muted by prior infection
- Interval from infection to vaccination inversely correlates with booster response
- Pre-boost RBD-specific CD21<sup>+</sup>CD27<sup>lo</sup> B cells are associated with booster response

Article

# Interval between prior SARS-CoV-2 infection and booster vaccination impacts magnitude and quality of antibody and B cell responses

Clarisa M. Buckner,<sup>1,6</sup> Lela Kardava,<sup>1,6</sup> Omar El Merhebi,<sup>1</sup> Sandeep R. Narpala,<sup>2</sup> Leonid Serebryanny,<sup>2</sup> Bob C. Lin,<sup>2</sup> Wei Wang,<sup>1</sup> Xiaozhen Zhang,<sup>1</sup> Felipe Lopes de Assis,<sup>1</sup> Sophie E.M. Kelly,<sup>3</sup> I-Ting Teng,<sup>2</sup> Genevieve E. McCormack,<sup>1</sup> Lauren H. Praiss,<sup>1</sup> Catherine A. Seamon,<sup>4</sup> M. Ali Rai,<sup>1</sup> Heather Kalish,<sup>3</sup> Peter D. Kwong,<sup>2</sup> Michael A. Proschan,<sup>5</sup> Adrian B. McDermott,<sup>2</sup> Anthony S. Fauci,<sup>1</sup> Tae-Wook Chun,<sup>1</sup> and Susan Moir<sup>1,7,\*</sup>

<sup>1</sup>Laboratory of Immunoregulation, National Institute of Allergy and Infectious Diseases, National Institutes of Health, Bethesda, MD 20892, USA

<sup>2</sup>Vaccine Research Center, National Institute of Allergy and Infectious Diseases, National Institutes of Health, Bethesda, MD 20892, USA

<sup>3</sup>Bioengineering and Physical Sciences Shared Resource, National Institute of Biomedical Imaging and Bioengineering, National Institutes of Health, Bethesda, MD 20892, USA

<sup>4</sup>Critical Care Medicine Department, Clinical Center, National Institutes of Health, Bethesda, MD 20892, USA

<sup>5</sup>Bioinformatics Research Branch, National Institute of Allergy and Infectious Diseases, National Institutes of Health, Bethesda, MD 20892, USA

<sup>6</sup>These authors contributed equally

<sup>7</sup>Lead contact

\*Correspondence: [smoir@niaid.nih.gov](mailto:smoir@niaid.nih.gov)

<https://doi.org/10.1016/j.cell.2022.09.032>

## SUMMARY

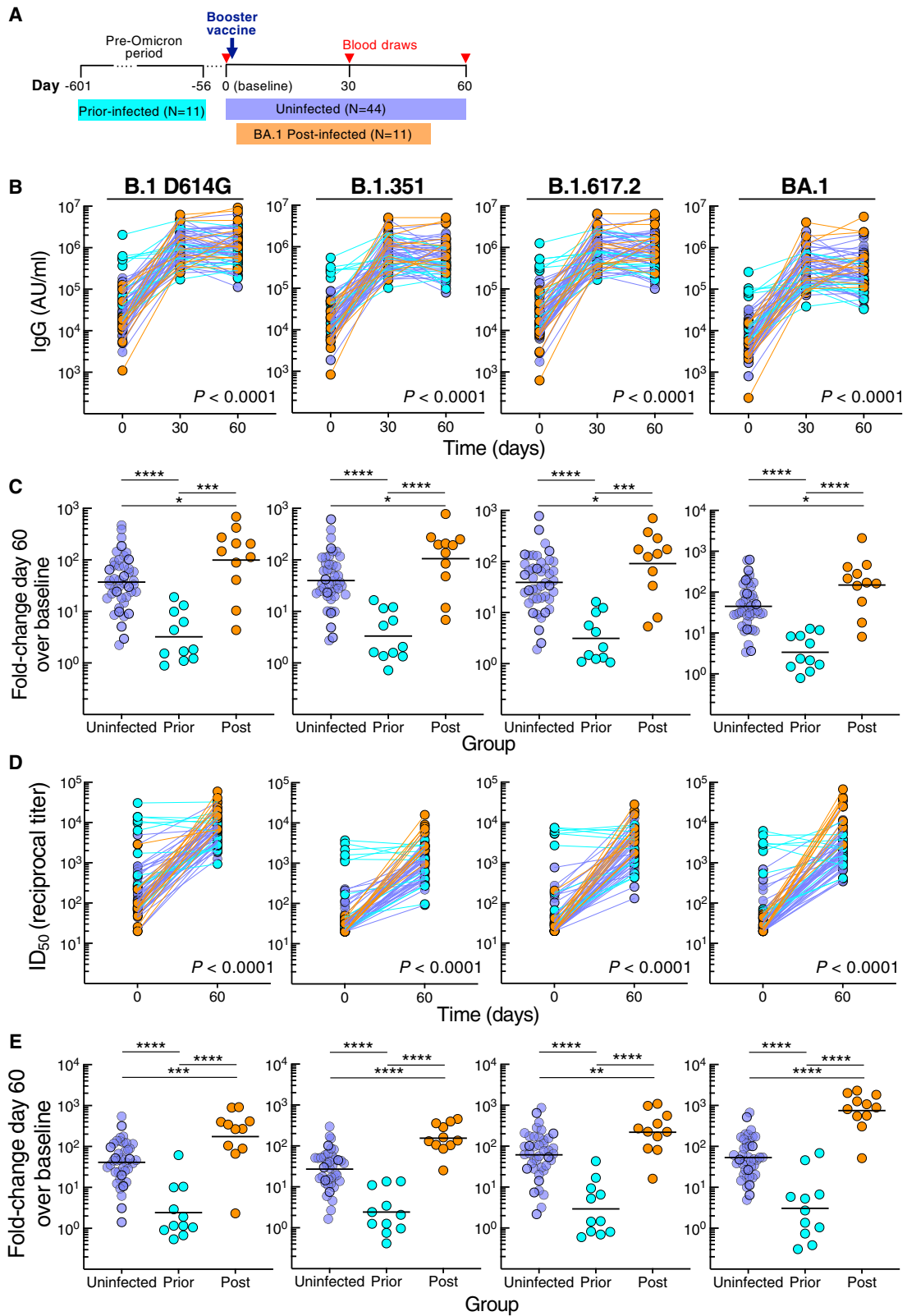
SARS-CoV-2 mRNA booster vaccines provide protection from severe disease, eliciting strong immunity that is further boosted by previous infection. However, it is unclear whether these immune responses are affected by the interval between infection and vaccination. Over a 2-month period, we evaluated antibody and B cell responses to a third-dose mRNA vaccine in 66 individuals with different infection histories. Uninfected and post-boost but not previously infected individuals mounted robust ancestral and variant spike-binding and neutralizing antibodies and memory B cells. Spike-specific B cell responses from recent infection (<180 days) were elevated at pre-boost but comparatively less so at 60 days post-boost compared with uninfected individuals, and these differences were linked to baseline frequencies of CD27<sup>lo</sup> B cells. Day 60 to baseline ratio of BCR signaling measured by phosphorylation of Syk was inversely correlated to days between infection and vaccination. Thus, B cell responses to booster vaccines are impeded by recent infection.

## INTRODUCTION

Severe acute respiratory syndrome coronavirus 2 (SARS-CoV-2) mRNA vaccines provide protection against symptomatic infection through the induction of strong humoral and cellular immunity (Laidlaw and Ellebedy, 2022; Sette and Crotty, 2021). The original two-dose BNT162b2 (Pfizer-BioNTech) or mRNA-1273 (Moderna) vaccine elicits antibodies that are highly effective at neutralizing the ancestral virus (Baden et al., 2021; Polack et al., 2020). More recent studies show booster doses increase potency and breadth of the neutralizing antibody response and the induction of strong memory B cell responses against variants of concern (VOCs) (Goel et al., 2022). Boosted immunity as a result of infection and vaccination, commonly referred to as hybrid immunity, is also highly protective against VOCs (Bhattacharya, 2022; Laidlaw and Ellebedy, 2022). In a study designed to delineate the effects of mRNA vaccination and/or previous infection on symptomatic infection and severity of disease

from Omicron subvariants BA.1 and BA.2, hybrid immunity resulting from previous infection and three doses of vaccine provided the best protection (Altarawneh et al., 2022).

Hybrid immunity from prior infection can provide both quantitative and qualitative benefits by imprinting effector CD4<sup>+</sup> T cell populations with enhanced antiviral properties and improving potency and breadth of B cell and antibody responses (Andreano et al., 2021; Rodda et al., 2022). However, some of these benefits may not extend to booster doses (Rodda et al., 2022), and the effects may be modulated by vaccine and/or infection histories. For example, imprinting from booster vaccination has an attenuating effect on response to Omicron infection while responses to other VOCs are boosted and response to Omicron is severely dampened by prior infection with ancestral but less affected by infections with other VOCs (Reynolds et al., 2022). Added to the increasing complexities associated with effects of infection and re-infection histories are challenges associated with timing of vaccines and how repeated boosting, whether



(legend on next page)

through vaccination or infection, affects the magnitude and durability of protective immunity. Previous findings from primary two-dose mRNA vaccines suggest that an extended interval between doses increases neutralizing antibody and cellular responses (Payne et al., 2021), especially B cell responses (Nicolas et al., 2022). However, as exposures to SARS-CoV-2 increase, whether through vaccination, infection, or both, it is unclear how timing between exposures modulates these responses. The risk of deleterious effects on the immune system from repeated and frequent stimulation with the same antigen is known from animal models where antibody-mediated feedback and other regulatory mechanisms have been described (Mesin et al., 2020; Zhang et al., 2013). The role of pre-existing antibody levels in regulating and restricting B cell responses is also reported in a SARS-CoV-2 mRNA vaccinee plasma transfer model (Dangi et al., 2022).

In this study, we investigate the effects of SARS-CoV-2 infection on antibody and B cell responses to a third dose of BNT162b2 or mRNA-1273 vaccine in a longitudinal cohort of uninfected, previously infected, and post-boost infected subjects. While we find robust spike-specific antibody and B cell responses to the booster vaccine in both uninfected and post-boost infected individuals, responses are muted in those who were infected prior to boosting. We present evidence that the interval between prior infection and booster vaccination is a critical determinant of the immune response to the booster vaccine and that B cells of individuals who were recently infected are minimally responsive to the booster vaccine. Our findings thus identify timing relative to infection as a key factor in immune boosting.

## RESULTS

### Prior SARS-CoV-2 infection restricts post-boost binding and neutralizing antibodies

From October 2021 through March 2022, a cohort of 66 adults scheduled to receive a third dose (booster) of either BNT162b2 or mRNA-1273 vaccine was recruited to donate blood at baseline (day 0) and days 30 and 60 post-vaccination. At day 60, participants were stratified into three groups based on exposure to SARS-CoV-2: uninfected ( $N = 44$ ) by nucleocapsid antibody serology, prior-infected ( $N = 11$ ), or post-infected ( $N = 11$ ) depending on whether exposure occurred prior to or after booster vaccination, respectively (Figure 1A; Tables 1 and S1). In the post-infected group, BA.1 Omicron was the PCR-confirmed or suspected infecting variant while in the prior-infected group, all infections occurred before the first reports of Omicron (Table S1). The interval between vaccination and post-boost infection ranged from 12 to 44 days with a median of 29 days,

and the interval between prior infection and vaccination ranged from 59 to 601 days with a median of 160 days (Tables 1 and S1). Demographics and schedule/source of vaccines did not significantly differ between the groups, except that age was slightly lower in the post-infected group compared with uninfected group, but not prior-infected group (Table 1; Figure S1A).

Serum immunoglobulin G (IgG) antibodies were measured against spike proteins of ancestral B.1 (D614G mutation) and nine variants, including VOC B.1.1.7 (Alpha), B.1.351 (Beta), B.1.617.2 (Delta; AY.4 lineage), and B.1.1.529 (Omicron; BA.1, BA.2, and BA.3 lineages) using a multiplex platform. Antibody titers increased from baseline to day 30 in all three groups, albeit more modestly for the prior-infected group (Figure S1B). By day 60, titers had plateaued in the uninfected group, increased slightly in the post-infected group against B.1 D614G and three variants, yet decreased in the prior-infected group against B.1 D614G and six variants (Figure S1B; Table S2). These temporal differences between groups, evaluated in a mixed-effects model considering time and exposure status, were highly significant for all three groups combined (Figures 1B and S1C) and between prior-infected and both uninfected and post-infected ( $p < 0.0001$  for each of the 10 spike measurements) but not between uninfected and post-infected groups (Table S3 showing all comparisons). At baseline, titers against all 10 spike proteins were higher in the prior-infected than uninfected and post-infected groups, while day 60 titers were lower in the prior-infected than post-infected and for five variants in the uninfected group (Figure S1D; Table S2). Titers were similar between the uninfected and post-infected group at baseline and marginally higher at day 60 in the post-infected group (Figure S1D; Table S2). The combination of high baseline titers with modest increases post-boost in the prior-infected group translated into fold increases between baseline and day 60 that were much lower compared with those of the uninfected and post-infected groups (Figure 1C; Table S2). As expected, the fold increases were modestly higher in the post-infected group compared with the uninfected group (Figure 1C; Table S2).

Serum neutralizing antibody activities were measured against B.1 D614G, B.1.351, B.1.617.2, and BA.1 using a pseudovirus-based assay (Gagne et al., 2022). Consistent with the antibody-binding titers, neutralization increased from baseline to day 60 in the uninfected and post-infected groups, whereas in contrast to antibody binding, neutralizing titers did not increase between baseline and day 60 in the prior-infection group (Figure S2A). These temporal differences, evaluated with the mixed-effects model described above, were highly significant for all three groups combined (Figure 1D), as well as between each group ( $p < 0.0001$  for the three group comparisons and

### Figure 1. SARS-CoV-2 infection status alters antibody responses to booster vaccination

(A) Graphical depiction of cohort and vaccination/blood draw schedule.

(B) IgG spike-binding titers expressed as AU/mL serum.

(C) Fold-change day 60 over baseline in serum IgG spike-binding titers.

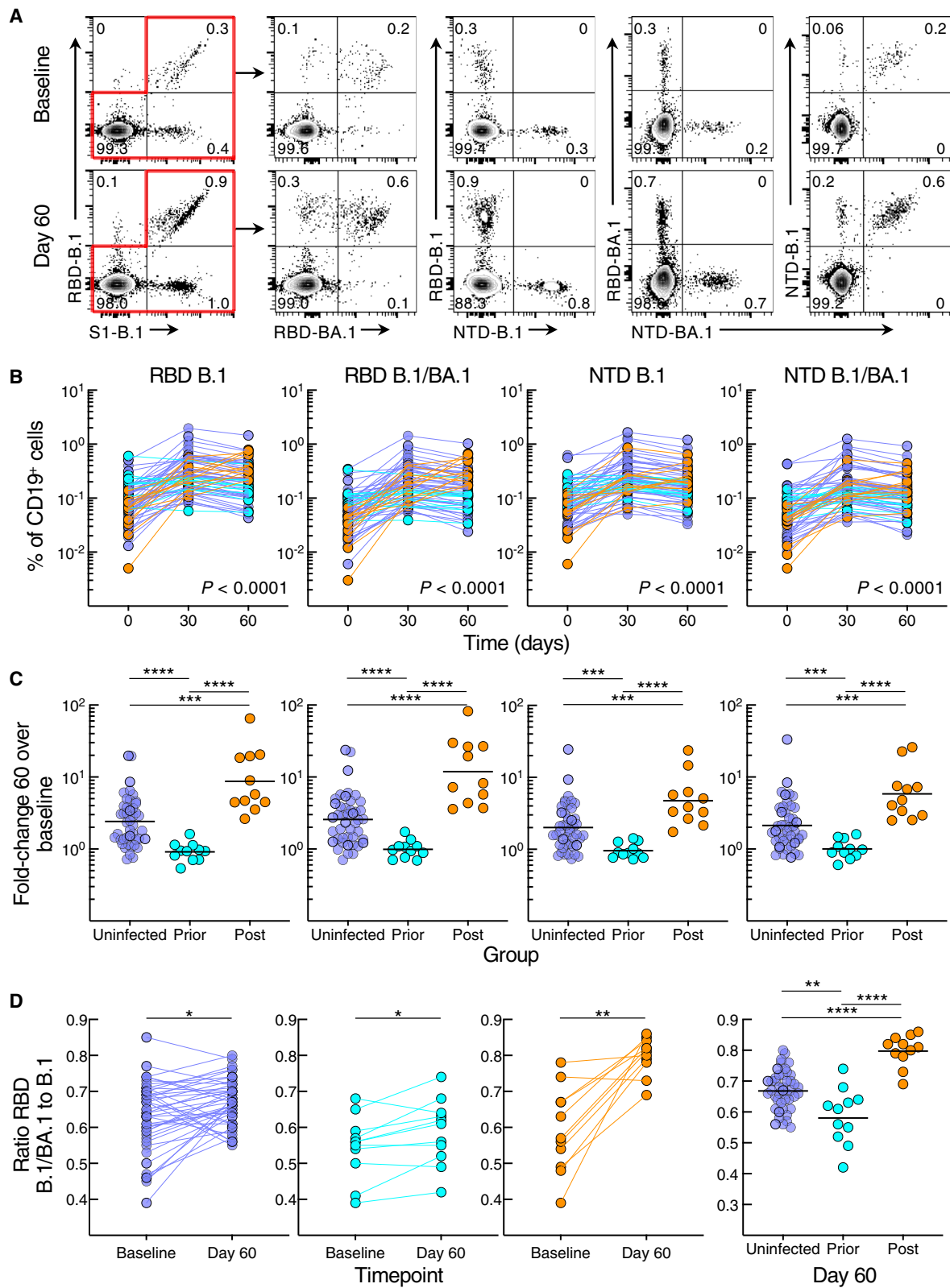
(D) Serum neutralizing titers against SARS-CoV-2 lentiviral pseudovirus expressed as reciprocal  $ID_{50}$ .  $N = 41$  for uninfected group.

(E) Fold-change day 60 over baseline in serum neutralizing titers against SARS-CoV-2 lentiviral pseudovirus.

Horizontal lines represent geometrical means and coloring scheme matches groups described in (A). Statistical analyses by mixed-effects model (B and D) or Kruskal-Wallis followed by pairwise Mann-Whitney tests (C and E). \* $p \leq 0.05$ , \*\* $p \leq 0.01$ , \*\*\* $p \leq 0.001$ , and \*\*\*\* $p < 0.0001$ .

See also Figures S1 and S2 and Tables S2 and S3.





(legend on next page)

**Table 1. Group characteristics**

Uninfected group	Prior-infected group	Post-infected group
Subjects (number)		
44	11	11
Age (years)		
54 (21–70) <sup>a</sup>	45 (31–65)	38 (23–56)
Female gender (number, %)		
28 (64%)	8 (73%)	6 (54%)
Prior infection to booster vaccine (days)		
N/A	160 (59–601)	N/A
Booster vaccine to post infection (days)		
N/A	N/A	29 (12–44)
Asymptomatic cases (number, %)		
N/A	2 (18%)	3 (27%)
Moderna; Pfizer; mixed (number, %)		
37 (84%); 5 (11%); 2 (4%)	8 (73%); 3 (27%)	8 (73%); 3 (27%)
Vaccine dose 1 to booster (days)		
318 (204–393)	323 (256–393)	322 (217–353)
Day 30 visit from booster vaccine (days)		
30 (26–32)	29 (28–32)	30 (28–36)
Day 60 visit from booster vaccine (days)		
60 (55–73)	61 (56–68)	60 (56–63)

<sup>a</sup>Median (range).

for each pseudovirus). Baseline neutralizing titers were higher in the prior-infected group compared with the uninfected and post-infected groups, while day 60 titers were higher in the post-infected compared with the other two groups (Figure S2B). These differences translated into higher fold increases between baseline and day 60 in the post-infected group compared with the two other groups and higher in the uninfected than prior-infected group (Figure 1E), consistent with the antibody-binding data. Overall, the kinetics and magnitude of antibody-binding and neutralizing titers differed between the groups, although most strikingly in the prior-infected group where antibody responses to the booster vaccine were muted.

### Prior SARS-CoV-2 infection restricts post-boost SARS-CoV-2 B cell responses

We used spectral flow cytometry to evaluate B cell responses to the booster vaccine with a 21-marker panel that included six tet-

ramers for evaluating responses against the spike protein subunit 1 (S1) of B.1, its receptor-binding domain (RBD) and N-terminal domain (NTD), as well as identifying B cells that bound RBD and NTD of both B.1 and BA.1 (Figures 2A and S3A). Frequencies of B.1 RBD, NTD, as well as dual B.1/BA.1 RBD and NTD-binding B cells increased significantly from baseline to day 60 in the uninfected and post-infected groups, peaking at day 30 in the uninfected group while continuing to increase (RBD) in the post-infected group (Figure S3B). In contrast, frequencies of spike-binding B cells in the prior-infected group did not significantly increase between baseline and day 60 and declined between days 30 and 60 against B.1 RBD and NTD and B.1/BA.1 NTD (Figure S3B). These temporal differences between groups, evaluated with the mixed-effects model described above, were highly significant for all three groups combined (Figure 2B), as well as between group pairs (Table S4 showing all comparisons). As with antibody titers, baseline frequencies of spike-binding B cells were higher in the prior-infected than uninfected and post-infected groups for B.1 RBD and NTD and B.1/BA.1 RBD (Figure S3C). At day 60, spike-binding frequencies were similar between the prior-infected and uninfected group yet were lower for B.1 RBD and B.1/BA.1 RBD in both groups when compared with the post-infected group (Figure S3C). These temporal differences translated into higher fold increases between baseline and day 60 in the post-infected group compared with the two other groups and higher in the uninfected than prior-infected group for both RBD and NTD and dual counterparts (Figure 2C).

We then considered whether post-boost BA.1 infection and/or the booster vaccine altered the ratio of dual B.1/BA.1 to single B.1 RBD or NTD binding. For RBD, the ratio of dual B.1/BA.1 to single B.1 binding increased from baseline to day 60 in all three groups; however, the ratio was highest in the post-infected group and lowest in the prior-infected group (Figure 2D). For NTD, the ratios increased from baseline to day 60 in the uninfected and post-infected but not prior-infected group and at day 60, and the ratios at day 60 were similarly higher in the uninfected and post-infected than in the prior-infected group (Figure S3D). Overall, the B cell response to the booster vaccine was poor in magnitude and breadth in the prior-infected group, whereas the response is robust in the uninfected and post-infected groups, with the latter having an additional boost from the breakthrough infection.

### Prior SARS-CoV-2 infection restricts post-boost memory B cell derived antibodies

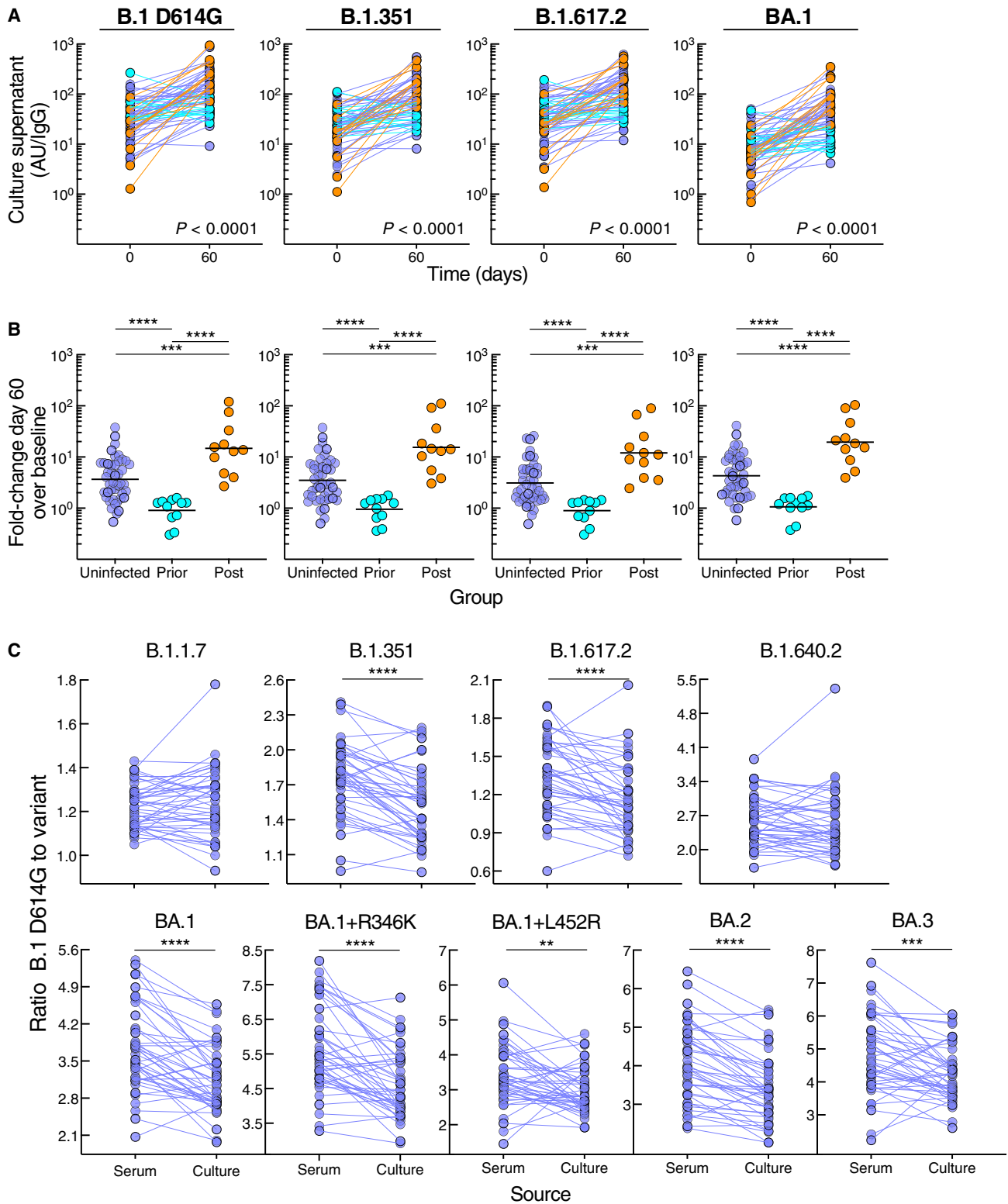
To gain further insight into B cell VOC responses after booster vaccination and the effect of post-boost BA.1 infection, we

**Figure 2. SARS-CoV-2 infection status alters B cell responses to booster vaccination**

- (A) Representative binding of B.1 and BA.1 RBD and NTD tetramers to non-naïve B cells at baseline and day 60 post booster vaccination.  
 (B) Frequencies of B.1 and BA.1 RBD and NTD tetramer-binding B cells.  
 (C) Fold-change day 60 over baseline of B.1 and BA.1 RBD and NTD tetramer-binding B cell frequencies.  
 (D) Ratio of dual B.1/BA.1 to single B.1 RBD binding to B cells.

Binding frequencies represent percentage of total CD19<sup>+</sup> B cells; see also Figure S3A for gating strategy. Horizontal lines represent geometrical means and coloring scheme matches groups described in Figure 1A. Statistical analyses by mixed-effects model (B), Wilcoxon signed rank test (D, baseline versus day 60), or Kruskal-Wallis followed by pairwise Mann-Whitney tests (C and D, right panel). \*p ≤ 0.05, \*\*p ≤ 0.01, \*\*\*p ≤ 0.001, and \*\*\*\*p < 0.0001.

See also Figure S3 and Table S4.



**Figure 3. SARS-CoV-2 infection status alters secreted antibody responses to booster vaccination**

(A) IgG spike-binding titers in culture supernatant expressed as AU/IgG.

(B) Fold-change day 60 over baseline of IgG spike-binding titers in culture supernatant.

(C) Ratio of B.1 D614G to variant IgG spike-binding titers in serum and culture supernatant.

(legend continued on next page)

performed *in vitro* culturing of peripheral blood mononuclear cells (PBMCs) at baseline and day 60 using polyclonal stimulation with TLR7/8 agonist R848 and IL-2, known to favor memory B cell differentiation and antibody secretion (Goel et al., 2021). We measured culture-derived antibodies with the same multiplex platform used for serum IgG titers, although relative activity levels were typically 2 to 3 logs lower in cultures than in serum and reported per total secreted IgG (Figure 3A). Consistent with the spike-binding B cell kinetics, spike-specific antibodies secreted from cultured PBMCs increased between baseline and day 60 in the uninfected and post-infected but not prior-infected group (Figure S4A; Table S5). These temporal differences, evaluated with the mixed-effects model described above, were highly significant for all three groups combined (Figures 3A and S4B), between prior-infected and both uninfected and post-infected groups ( $p < 0.0001$  for each of the 10 spike measurements), as well as between the uninfected and post-infected group, albeit somewhat less pronounced (Table S6 showing all comparisons). Baseline secreted antibodies were modestly higher in the prior-infected group compared with uninfected and/or post-infected group against the five non-Omicron spike proteins whereas there were no baseline differences against the five Omicron variants tested (Figure S4C; Table S5), the lack of measurable differences possibly due to low baseline Omicron-specific antibodies. However, by day 60, secreted antibody titers were lower in the prior-infected compared with both uninfected and post-infected group, and lower in the uninfected compared with the post-infected group (Figure S4C; Table S5). As with serum antibodies and spike-binding B cells, these temporal differences translated into higher fold increases of secreted antibodies between baseline and day 60 in the post-infected group compared with the two other groups and higher in the uninfected than prior-infected group against all 10 spike proteins (Figure 3B; Table S5). Overall, spike-specific antibodies secreted from memory B cells did not increase in the prior-infected group after the vaccine boost, and while levels compared with both uninfected and post-infected groups were similar or modestly higher at baseline, they were sharply lower by day 60.

### Enhanced breadth of antibodies secreted from memory B cells

The robust secreted antibody response at day 60 in the large uninfected group provided an opportunity to consider whether antibodies derived from memory B cells had greater breadth compared with serum antibodies, as suggested in previous studies (Muecksch et al., 2022; Purtha et al., 2011). Accordingly, we compared ratios of B.1 D614G to variant antibody titers between the two sources. For seven of the nine spike variants tested, the fold difference was significantly reduced for the culture-secreted antibodies compared with those in serum while differences were not significant for two variants (Figure 3C), confirming the superior breadth in memory B cell compartment.

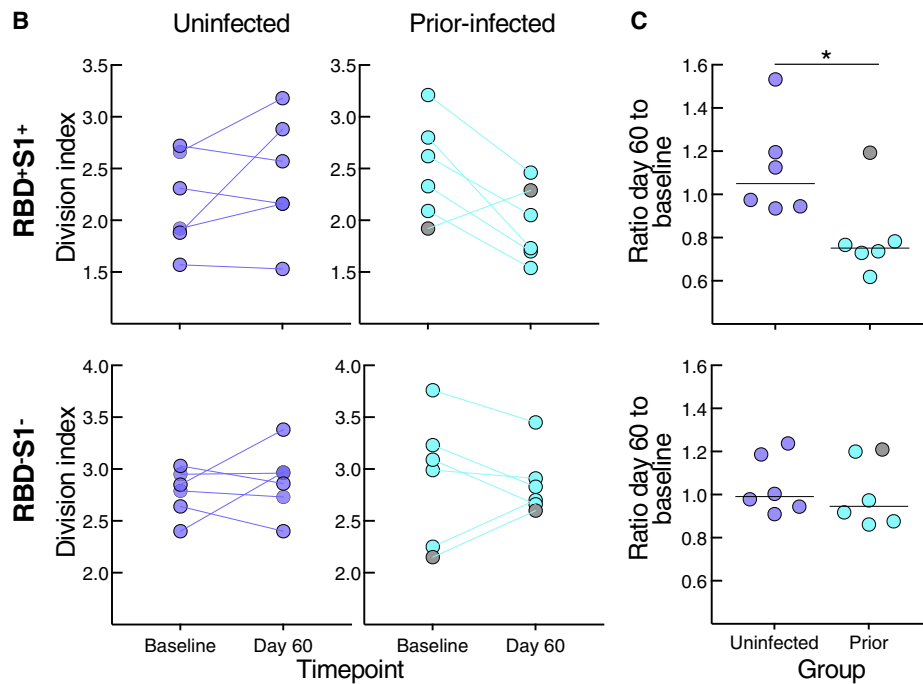
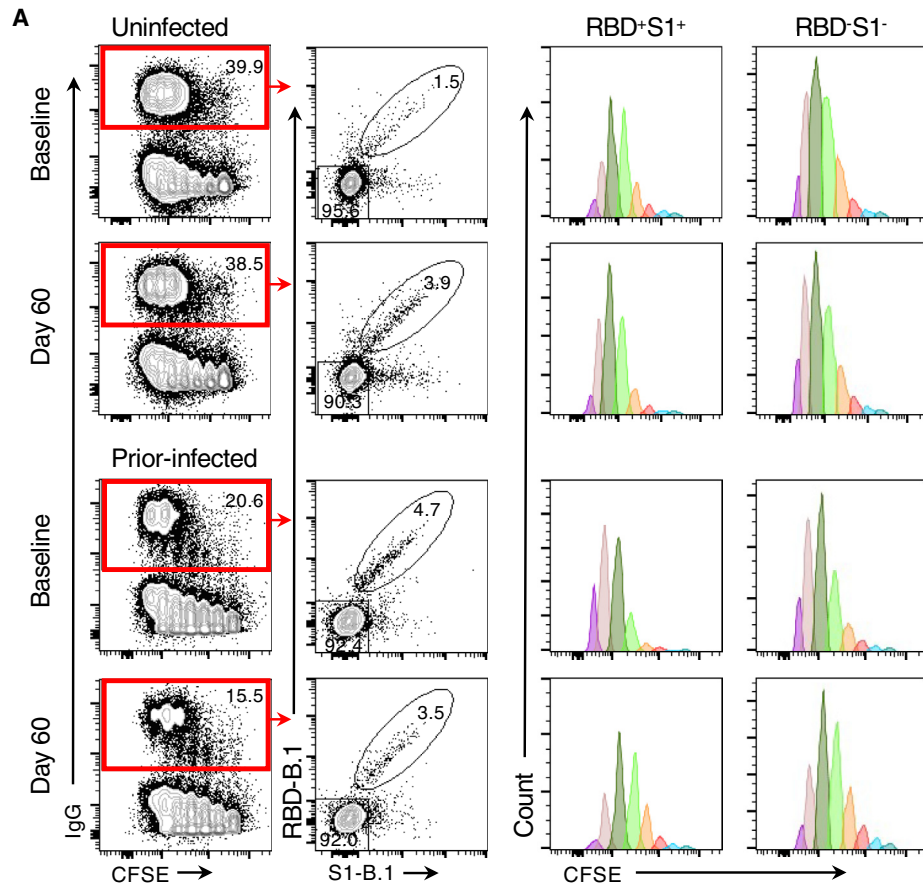
### Prior SARS-CoV-2 infection alters B cell responses and phenotypes

The fold changes in memory B cell responses to booster vaccination were significantly lower in the prior-infected group compared with the two other groups, whether measured by direct binding (Figure 2) or secreted antibodies (Figure 3). However, at day 60, titers of secreted spike-binding antibodies were significantly lower in the prior-infected compared with the uninfected group (Figure S4C), while frequencies of spike-binding B cells were similar (Figure S3C). This contrast suggested that prior infection may have led to a reduced B cell responsiveness to stimulation after vaccination. We also observed a dichotomous pattern of antibody titers and B cell responses within the prior-infected group (clearly discernable in Figures 1B, 1D, and S1C) that may have been driven by the wide range of intervals between infection and vaccination (59–601 days: Tables 1 and S1). This led us to consider whether the interval between infection and vaccination may have contributed to the differences in antibody and B cell responses observed within this group. Notably, in individuals whose infection occurred more than 180 days prior to receiving their booster vaccine, secreted spike-binding antibodies increased between baseline and day 60 (Figure S5A), as observed for most individuals in the uninfected and all in the post-infected group (Figure S4A). In contrast, all decreases in secreted antibodies between baseline and day 60 were among the six individuals whose breakthrough infection occurred less than 180 days from vaccination, henceforth referred to as a recent infection (Figure S5A).

To determine whether the reduced antibody secretion in the prior-infected group reflected lower B cell proliferation and differentiation *in vitro*, we cultured carboxyfluorescein succinimidyl ester (CFSE)-labeled baseline and day 60 PBMCs of the six individuals whose prior infection was <180 days from vaccination and of six uninfected individuals matched for demographics and baseline B cell spike-binding frequencies. After 4 days in culture under the same conditions used to induce antibody secretion, the cells were stained with RBD and S1 tetramers and CFSE dilution was measured among spike-positive ( $\text{RBD}^+\text{S1}^+$ ) and spike-negative ( $\text{RBD}^-\text{S1}^-$ ) IgG-expressing B cells (Figures 4A and S5B). The division index, a measure of cell division among both proliferating and non-proliferating cells, did not significantly differ at baseline and day 60 within and between the two groups for both  $\text{RBD}^+\text{S1}^+$  and  $\text{RBD}^-\text{S1}^-$  B cells, although there was a clear downward trend among  $\text{RBD}^+\text{S1}^+$  B cells of five of the six individuals in the prior-infected group (Figure 4B). This trend translated into a ratio of day 60 to baseline indices for  $\text{RBD}^+\text{S1}^+$  B cells that was significantly lower in the prior-infected compared with the uninfected group, while ratios among  $\text{RBD}^-\text{S1}^-$  B cells remained close to 1.0 for both groups and for  $\text{RBD}^+\text{S1}^+$  B cells of the uninfected group (Figure 4C). Notably, the individual in the prior-infected group with an  $\text{RBD}^+\text{S1}^+$  B cell ratio above 1.0 in Figure 4C (denoted by gray circles) was one of the two, and the higher of the

Culture supernatant titers represent spike-binding IgG per total IgG. Horizontal lines represent geometrical means and coloring scheme matches groups described in Figure 1A. Statistical analyses by mixed-effects model (A), Kruskal-Wallis followed by pairwise Mann-Whitney tests (B), or Wilcoxon signed rank test (C). \*\* $p \leq 0.01$ , \*\*\* $p \leq 0.001$ , and \*\*\*\* $p < 0.0001$ .

See also Figure S4 and Tables S5 and S6.



(legend on next page)



two in the subgroup, whose secreted spike-binding antibodies increased between baseline and day 60 (Figure S5A).

We then considered whether the relative reduction in responsiveness of cultured spike-specific B cells in the prior infection subgroup was intrinsic to the B cells. While there are many assays to assess B cell responsiveness, including intracellular calcium flux and signaling responses following B cell receptor (BCR) stimulation, only the latter can adequately capture rare antigen-specific events within the confines of cells available in clinical trials and the narrow timeframe needed to detect bound antigen. Accordingly, we stimulated the B cells with anti-BCR and measured phosphorylation of tyrosine kinase Syk and phospholipase C- $\gamma$ 2 (PLC- $\gamma$ 2), which lies downstream of Syk (Packard and Cambier, 2013), and both have been shown to undergo rapid and strong induction following antigen binding and BCR aggregation (Glass et al., 2020). The phosphorylation of Syk and PLC- $\gamma$ 2 was clearly discernable among the RBD-binding B cells following anti-BCR treatment (Figure 5A). In the uninfected group, BCR signaling led to similar levels of phosphorylated (p-) Syk, p-PLC- $\gamma$ 2 and combination of p-Syk/p-PLC- $\gamma$ 2 RBD<sup>+</sup> B cells at baseline and day 60, while in the prior-infected group, levels for p-Syk and p-Syk/p-PLC- $\gamma$ 2 decreased between baseline and day 60, and baseline levels were higher than in the uninfected group for all three measurements (Figure 5B). Among RBD<sup>-</sup> B cells, there was a downward trend in the prior-infected group between baseline and day 60 that was significant for p-PLC- $\gamma$ 2, although there were no differences between the groups (Figure S6A). These temporal dynamics translated into ratios of day 60 to baseline p-Syk and p-Syk/p-PLC- $\gamma$ 2 that were close to 1.0 among RBD<sup>-</sup> and RBD<sup>+</sup> B cells of the uninfected group while they were below 1.0 among RBD<sup>+</sup>, and to a lesser extent, RBD<sup>-</sup> B cells of the prior-infected group and significantly lower than those of the uninfected group (Figure 5C). For p-PLC- $\gamma$ 2, ratios were close to 1.0 and not significantly different between the groups (Figure S6B). Furthermore, within the prior-infection group, the interval between infection and vaccination was strongly correlated with the p-Syk ratio in that the shorter the interval the lower the induction of p-Syk at day 60 relative to baseline (Figure 5D).

Elevated basal p-Syk and reduced induction following BCR stimulation are hallmarks of certain chronic conditions such as autoimmunity and persisting pathogens, such as HIV, and are generally associated with distinct B cell populations, many of which express reduced levels of CD21 (Schrezenmeier et al., 2019). Activation of B cells in response to SARS-CoV-2 infection and vaccination is also accompanied by a reduction in the expression of CD21 on B cells (Kardava et al., 2022; Rodda

et al., 2022; Woodruff et al., 2020). Antigen-experienced B cells can also express variable levels of CD27 (Baumgarth, 2021). Both markers were differentially modulated by prior infection on RBD<sup>+</sup> B cells (Figure 6A). At baseline, the two groups had similarly low frequencies of CD21<sup>lo</sup> B cells while the uninfected group had higher frequencies of CD21<sup>+</sup>CD27<sup>lo</sup> B cells (Figure 6B). Between baseline and day 60, frequencies of CD21<sup>lo</sup> B cells increased in both groups but the increase was greater in the uninfected group (Figure 6B). In contrast, frequencies of CD21<sup>+</sup>CD27<sup>lo</sup> B cells decreased between baseline and day 60 in the uninfected but not prior-infected group and frequencies were similar at day 60 in the two groups. Finally, we considered whether CD27<sup>lo</sup> among CD21<sup>+</sup> B cells were less responsive to BCR stimulation than their CD27<sup>+</sup> counterparts, and possibly explaining the lower baseline p-Syk and p-PLC- $\gamma$ 2 induction in the uninfected compared with the prior-infected group (Figure 5B). At baseline in the uninfected group, levels of BCR-induced p-Syk among RBD<sup>+</sup> B cells were lower for the CD27<sup>lo</sup> compared with the CD27<sup>+</sup> fraction (Figure 6C). Collectively, these findings suggest that prior to booster vaccination, spike-specific B cells of recently infected individuals are more poised to respond to stimulation than those of uninfected individuals yet are refractory to further stimulation following vaccination.

## DISCUSSION

Booster vaccines against SARS-CoV-2 play an essential role in protecting against severe COVID-19 (Bhattacharya, 2022). Booster mRNA vaccines induce potent antibody and memory B cell responses (Goel et al., 2022), although both are modulated by infection histories (Reynolds et al., 2022). In this study, we investigated the effect of SARS-CoV-2 infection on antibody and B cell responses to mRNA booster vaccines in a longitudinal cohort that included subjects who remained uninfected throughout the study period, as well as subjects who were infected prior to study and subjects who experienced a breakthrough infection during the study period. Collectively, our data identified prior infection, and more specifically, recent prior infection with SARS-CoV-2 to be associated with a diminished response to the booster vaccine when compared with uninfected and post-boost infected subjects. The diminished response in the prior-infected group was most notable for the fact that neutralizing antibodies and B cell responses to the vaccine boost did not increase between baseline and study endpoint (day 60). Antibody and B cell responses tended to be higher at baseline in the prior-infected group compared with the two other groups, consistent with the effects of hybrid

### Figure 4. SARS-CoV-2 recent infection decreases proliferative response of spike-specific B cells after booster vaccination

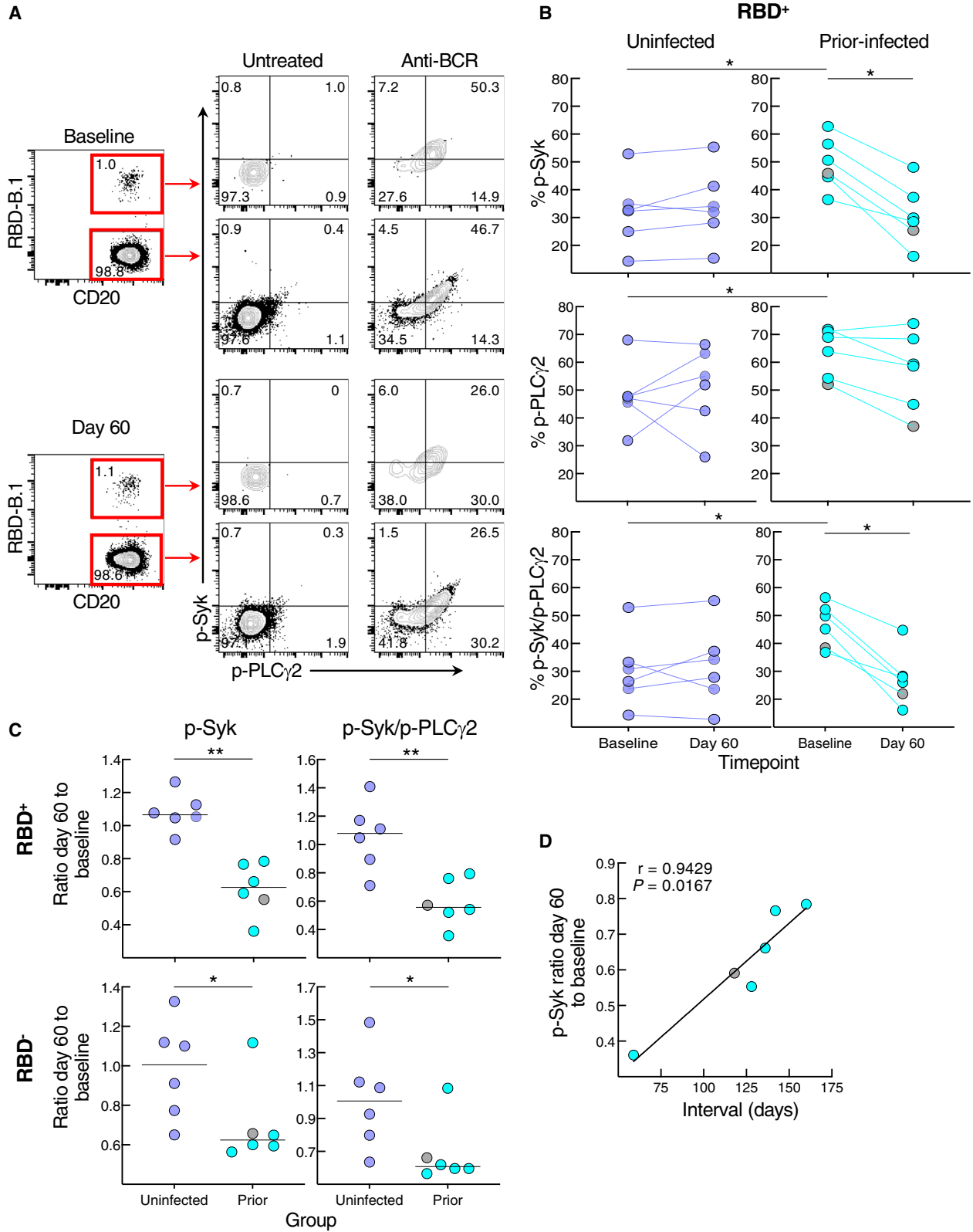
(A) Representative baseline and day 60 CFSE-dilution plots of RBD<sup>+</sup>S1<sup>+</sup> and RBD<sup>-</sup>S1<sup>-</sup> IgG-expressing B cells among stimulated PBMCs. Numbers represent percentages.

(B) Division indices of RBD<sup>+</sup>S1<sup>+</sup> and RBD<sup>-</sup>S1<sup>-</sup> IgG-expressing B cells.

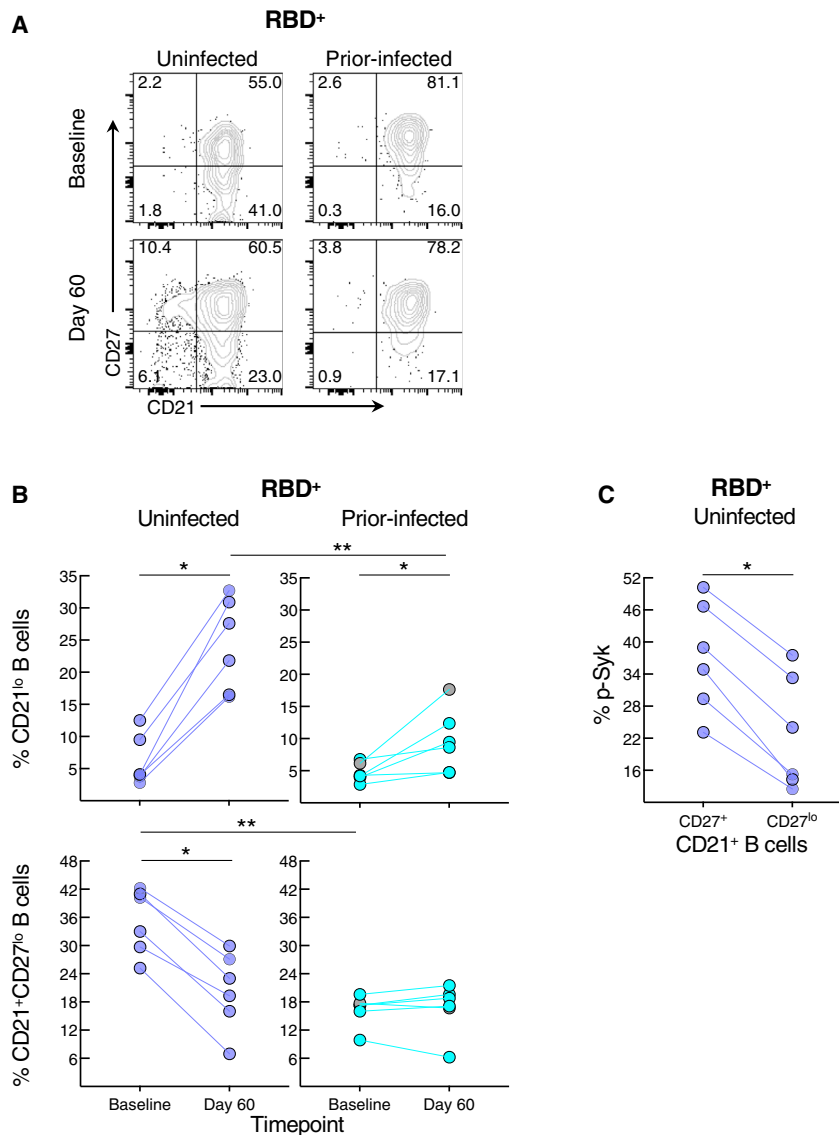
(C) Ratio of day 60 to baseline division indices of RBD<sup>+</sup>S1<sup>+</sup> and RBD<sup>-</sup>S1<sup>-</sup> IgG-expressing B cells.

CFSE-labeled PBMCs were stimulated for 4 days then stained with anti-IgG, B.1 S1, and RBD tetramers and other markers shown with gating strategy in Figure S5B. Division indices were measured for RBD<sup>+</sup>S1<sup>+</sup> and RBD<sup>-</sup>S1<sup>-</sup> IgG-gated B cells. Horizontal lines represent medians and coloring scheme matches groups described in Figure 1A. Gray circles refer to subject 00065 R in Table S1 and Figure S5A. Statistical analyses by Wilcoxon signed rank (B) or Mann-Whitney test (C). \* $p \leq 0.05$ .

See also Figure S5.



(legend on next page)



immunity (Reynolds et al., 2022; Rodda et al., 2022); however, they were similar to or lower than the other two groups at endpoint. Given that vaccine-specific antibody titers and B cell frequencies were generally similar between the uninfected and prior-infected group, our data do not suggest diminished immunity in prior-infected individuals but rather that the booster

was ineffective when administered after a recent infection.

We found strong concordance between the antibody and B cell responses after boosting, both in terms of kinetics, response to variants, and differences in responses between the groups. The patterns of fold-change between baseline and day 60 were almost identical from one assay to another, whether serum binding or neutralizing antibody titers or frequencies of spike-specific B cells and their secreted antibodies were measured: the post-infected group experienced the largest fold-change, as might be expected, while the prior-infected group had the lowest fold-change. The temporal dynamics were also similar across the different assays, and these were clearly influenced by infection status, although differences were more

pronounced between prior-infected and both uninfected and post-infected groups than between the latter two groups.

Despite the many similarities between the assays, there were notable distinctions. Serum binding antibodies in the prior-infected group did increase after boosting and remained higher at day 60 than baseline, in contrast to all other measurements

### Figure 5. SARS-CoV-2 recent infection decreases BCR signaling response of spike-specific B cells after booster vaccination

(A) Representative baseline and day 60 phosphorylation of Syk and PLC $\gamma$ 2 with and without anti-BCR treatment shown for RBD $^{+}$  and RBD $^{-}$  non-naïve B cells of a recent prior-infected subject. Numbers represent percentages.

(B) Anti-BCR-induced phosphorylation of Syk and PLC $\gamma$ 2 among RBD $^{+}$  B cells, showing untreated subtracted frequencies.

(C) Ratio of day 60 to baseline of anti-BCR-induced phosphorylation of Syk and Syk/PLC $\gamma$ 2 among RBD $^{+}$  and RBD $^{-}$  B cells.

(D) Correlation of p-Syk ratio day 60 to baseline and time interval between infection and vaccination.

PBMCs were stained with B.1 RBD tetramer, IgD, and CD27 for gating on non-naïve B cells and other markers (see Figure S3A) and incubated at 37°C for 2 min with or without anti-BCR, then stained for phosphorylated markers shown. Horizontal lines represent medians and coloring scheme matches groups described in Figure 1A. Gray circles refer to subject 00065 R in Table S1 and Figure S5A. Statistical analyses by Wilcoxon signed rank test (B for baseline versus day 60), Mann-Whitney test (B for uninfected versus prior-infected and C), or Spearman rank order correlation (D). \* $p \leq 0.05$ , \*\* $p \leq 0.01$ . See also Figure S6.

### Figure 6. SARS-CoV-2 recent infection alters the phenotype of spike-specific B cells

(A) Representative expression of CD21 and CD27 among RBD $^{+}$  B cells at baseline and day 60 post-boost. Numbers represent percentages.

(B) Frequencies of CD21 $^{lo}$  and CD21 $^{+}$ CD27 $^{lo}$  RBD $^{+}$  B cells at baseline and day 60 post-boost.

(C) Baseline uninfected anti-BCR-induced phosphorylation of Syk among CD21 $^{+}$ CD27 $^{lo}$  and CD21 $^{+}$ CD27 $^{+}$  RBD $^{+}$  B cells.

Populations shown in (A) and frequencies measured in (B) were from the CD19 $^{+}$  gate shown in Figure S3A and those in (C) further gated on CD21 $^{+}$  B cells. Horizontal lines represent medians and coloring scheme matches groups described in Figure 1A. Gray circles refer to subject 00065 R in Table S1 and Figure S5A. Statistical analyses by Wilcoxon signed rank (B for baseline versus day 60 and C) or Mann-Whitney test (B for uninfected versus prior-infected). \* $p \leq 0.05$ , \*\* $p \leq 0.01$ .

vaccine was ineffective when administered after a recent infection.

We found strong concordance between the antibody and B cell responses after boosting, both in terms of kinetics, response to variants, and differences in responses between the groups. The patterns of fold-change between baseline and day 60 were almost identical from one assay to another, whether serum binding or neutralizing antibody titers or frequencies of spike-specific B cells and their secreted antibodies were measured: the post-infected group experienced the largest fold-change, as might be expected, while the prior-infected group had the lowest fold-change. The temporal dynamics were also similar across the different assays, and these were clearly influenced by infection status, although differences were more

of antibody and B cell activity that were unchanged between the two time points. It is unclear why the increase was limited to binding antibodies, but this may be related to the induction of short-lived plasmablasts that are more likely to produce binding but not more matured neutralizing antibodies (Bhattacharya, 2022). It is noteworthy that binding antibody titers against ancestral and most variants declined between day 30 and 60 in the prior-infected group, but not the uninfected or post-infected groups, consistent with a short-lived plasmablast-mediated rise in the prior-infected group. The temporal dynamics were also different between spike-binding antibodies, which were stable or increased from day 30 to day 60 in groups without prior infection, and spike-binding B cells, which declined during this period in the uninfected group and marginally increased against RBD in the post-infected group. Similar findings have been reported by others and in our previous study (Goel et al., 2022; Kardava et al., 2022), likely reflecting peak B cell activation that occurs between 2 and 4 weeks after a second or third dose of vaccine.

Booster vaccination and infection also differentially impacted immune responses to viral variants. As expected, responses to the BA.1 variant in the post-infected group, all of whom were confirmed or suspected to have been infected with BA.1, were strong. However, except for neutralizing antibody titers, the increase in response to the BA.1 spike in the BA.1-infected group was similar in magnitude to responses to ancestral and the other variants spike antigens. The somewhat modest response to BA.1 may be explained by several factors, including vaccinal imprinting (Reynolds et al., 2022), the relatively mild clinical nature of BA.1 (Sigal, 2022), and the proximity of day 60 to the breakthrough infection, a median of 29 days with a range of 12–44 days. Beyond the effect of BA.1 infection on the overall immune response to a range of variants, we noted that antibodies secreted from cultured PBMCs, which most likely originated from memory B cells, had greater breadth compared with serum antibodies, which most likely originated from lymphoid tissue resident plasma cells. These data are consistent with previous animal and more recent COVID-19 vaccine studies (Muecksch et al., 2022; Purtha et al., 2011), highlighting the critical role of the cellular immune response in a pandemic driven by rapidly evolving variants. We also noted that while both uninfected and post-infected groups increased their post-boost ratio of B cells that bound both B.1 and BA.1 RBD and NTD relative to B.1 alone, the increase was restricted to RBD in the prior-infected group, and the ratio at day 60 was significantly lower compared with the other two groups, suggesting a more limited cellular immune response to certain variants.

While all fold changes between day 60 and baseline revealed a muted post-boost response in the prior-infected group, we were struck by the dichotomous nature of responses within this group and the significantly lower day 60 secreted spike-binding antibody titers despite similar spike-binding B cell numbers when compared with the uninfected group. We determined that the dichotomous response was largely driven by the interval between infection and booster vaccination, where those who were most recently infected had the highest spike-specific baseline antibody titers and B cell frequencies, yet the weakest post-boost responses. Given the relatively lower secretion of spike-

binding antibodies from *in vitro* stimulated B cells compared with frequencies of spike-binding B cells, we initially considered that recent infection may be causing functional non-responsiveness or post-activation anergy (Schrezenmeier et al., 2019). However, taken collectively, our data suggest a more nuanced effect of recent infection on response to booster vaccination. While spike-specific B cells of recently infected individuals clearly underwent fewer *in vitro* cell divisions at day 60 compared with baseline with a corresponding decrease in BCR signaling, cell division indices and levels of anti-BCR-induced phosphorylation were not significantly different at day 60 between the six recently infected and six uninfected individuals. The main differences between these two groups were at baseline, where signaling responses to BCR stimulation were stronger in the recently infected group. We might have expected CD21<sup>lo</sup> B cells to be responsible for the differences in BCR signaling, given their elevated state of activation/signaling in chronic conditions (Jenks et al., 2018; Kardava et al., 2018), and following vaccination/infection, including in patients with COVID-19 (Castleman et al., 2022; Kardava et al., 2022; Rodda et al., 2022; Woodruff et al., 2020). However, frequencies of CD21<sup>lo</sup> B cells among spike-specific B cells were found to be similarly low in both groups at baseline and increased at day 60 post-boost in uninfected but not recently infected subjects, consistent with the muted response of the latter group to vaccination. Instead, we found a higher frequency of CD27<sup>lo</sup> among spike-specific CD21<sup>+</sup> B cells in the uninfected compared with recently infected group and a corresponding lower BCR signaling response among CD27<sup>lo</sup> compared with CD27<sup>+</sup> B cells. Resting CD21<sup>+</sup>CD27<sup>lo</sup> B cells have been shown to be more durable than other memory B cell populations following influenza vaccination (Andrews et al., 2019) and were found to increase over time after two doses of the BNT162b2 mRNA vaccine (Kotaki et al., 2022). We speculate that despite being in a resting state, CD27<sup>lo</sup> B cells are better poised than other memory B cells to respond robustly upon re-encounter with antigen. For the poor responders among the prior-infected group, their infection induced a robust response, as evidenced by the high baseline titers and responding B cells; however, the interval between infection and vaccination was likely insufficient for their B cells to return to an optimal resting state and respond efficiently to the booster.

In summary, we have shown that antibody and B cell responses to SARS-CoV-2 booster vaccination are impacted by infection status, where prior SARS-CoV-2 infection is associated with a muted response, the extent of which is dictated by the interval between infection and vaccination. When the interval is too short, the response induced by the recent infection appears to prevent B cells from responding to the subsequent booster vaccine. As a growing number of people are infected and re-infected with SARS-CoV-2, these findings may help provide guidance for future recommendations on how to establish booster vaccine schedules that account for infection histories.

#### Limitations of the study

There are several limitations to our study, most notably the small number of subjects in the prior-infected and post-infected groups and the limited number of individuals in the former group

whose booster vaccine was administered within 180 days of infection. These are inevitable limitations of human studies, yet future studies will be needed to confirm and extend our findings and to determine whether additional ancestral and/or variant boosters will lead to similar outcomes in the absence or presence of breakthrough infections. Our study did not consider other likely contributors to outcomes, including the effect of T cells, both *in vivo* and *in vitro*, where they—along with other lineages and corresponding soluble factors—likely modulated B cell division, differentiation, and antibody secretion. We also did not directly address the possibility that the prior-infected group expanded memory B cell responses to the S2 subunit of the spike protein following booster vaccination. Finally, our study did not consider Omicron subvariants BA.4/5, which have been widely circulating since the spring of 2022 and were included in the fall 2022 bivalent mRNA vaccines produced by Pfizer-Biontech and Moderna. Current studies are ongoing to evaluate immune responses to BA.4/5 infection and/or vaccination.

## STAR★METHODS

Detailed methods are provided in the online version of this paper and include the following:

- [KEY RESOURCES TABLE](#)
- [RESOURCE AVAILABILITY](#)
  - Lead contact
  - Materials availability
  - Data and code availability
- [EXPERIMENTAL MODEL AND SUBJECT DETAILS](#)
  - Ethics statement
  - Human study subject recruitment, visits, and clinical data
- [METHOD DETAILS](#)
  - Blood sample collection, processing, and storage
  - *In vitro* differentiation of memory B cells into antibody-secreting cells
  - Serum and culture supernatant antibody titers
  - Lentiviral pseudovirus neutralization
  - Biotinylated NTD proteins
  - Spike-binding B cells
  - Proliferation assay
  - Phosphorylation assay
- [QUANTIFICATION AND STATISTICAL ANALYSIS](#)

## SUPPLEMENTAL INFORMATION

Supplemental information can be found online at <https://doi.org/10.1016/j.cell.2022.09.032>.

## ACKNOWLEDGMENTS

We thank all participants for their willingness to take part in this study; Catherine Rehm, Ulisses Santamaria, Jessica Earhart, Kathleen Gittens, and Michael Sneller for clinical support; Kaitlyn Sadtler and Dominic Esposito for development of antibody assays used in this study; Robin Carroll, Nazaire Jean-Baptiste, and Lu Wang for technical assistance; and Robert Seder for helpful discussions. This work was funded by the Intramural Research Programs of the Vaccine Research Center and the Division of Intramural Research, National

Institutes of Allergy and Infectious Diseases, National Institutes of Health. The graphical abstract was created in part with [Biorender.com](#).

## AUTHOR CONTRIBUTIONS

C.M.B., L.K., H.K., M.A.P., A.B.M., A.S.F., T.-W.C., and S.M. designed the research. C.M.B., L.K., O.E.M., S.R.N., L.S., B.C.L., W.W., X.Z., F.L.A., S.E.M.K., G.E.M., L.H.P., H.K., M.A.P., A.B.M., T.-W.C., and S.M. performed, analyzed, and/or supervised the experiments. G.E.M., L.H.P., C.A.S., and M.A.R. oversaw clinical recruitment and/or medical aspects or assisted with sample collection. I.-T.T. and P.D.K. provided critical reagents. L.K., T.-W.C., and S.M. designed the figures. C.M.B., L.K., M.A.P., A.S.F., T.-W.C., and S.M. wrote the manuscript. All authors reviewed and edited the manuscript.

## DECLARATION OF INTERESTS

The authors declare no competing interests.

Received: August 18, 2022

Revised: September 15, 2022

Accepted: September 23, 2022

Published: September 27, 2022

## REFERENCES

- Altarawneh, H.N., Chemaitelly, H., Ayoub, H.H., Tang, P., Hasan, M.R., Yassine, H.M., Al-Khatib, H.A., Smatti, M.K., Coyle, P., Al-Kanaani, Z., et al. (2022). Effects of previous infection and vaccination on symptomatic omicron infections. *N. Engl. J. Med.* 387, 21–34. <https://doi.org/10.1056/NEJMoa2203965>.
- Andreano, E., Paciello, I., Piccini, G., Manganaro, N., Pileri, P., Hyseni, I., Leonard, M., Pantano, E., Abbiento, V., Benincasa, L., et al. (2021). Hybrid immunity improves B cells and antibodies against SARS-CoV-2 variants. *Nature* 600, 530–535. <https://doi.org/10.1038/s41586-021-04117-7>.
- Andrews, S.F., Chambers, M.J., Schramm, C.A., Plyler, J., Raab, J.E., Kane-kiyo, M., Gillespie, R.A., Ransier, A., Darko, S., Hu, J., et al. (2019). Activation dynamics and immunoglobulin evolution of pre-existing and newly generated human memory B cell responses to influenza hemagglutinin. *Immunity* 51, 398–410.e5. <https://doi.org/10.1016/j.immuni.2019.06.024>.
- Baden, L.R., El Sahly, H.M., Essink, B., Kotloff, K., Frey, S., Novak, R., Diemert, D., Spector, S.A., Roupael, N., Creech, C.B., et al. (2021). Efficacy and safety of the mRNA-1273 SARS-CoV-2 vaccine. *N. Engl. J. Med.* 384, 403–416. <https://doi.org/10.1056/NEJMoa2035389>.
- Baumgarth, N. (2021). The shaping of a B cell pool maximally responsive to infections. *Annu. Rev. Immunol.* 39, 103–129. <https://doi.org/10.1146/annurev-immunol-042718-041238>.
- Bhattacharya, D. (2022). Instructing durable humoral immunity for COVID-19 and other vaccineable diseases. *Immunity* 55, 945–964. <https://doi.org/10.1016/j.immuni.2022.05.004>.
- Castleman, M.J., Stumpf, M.M., Therrien, N.R., Smith, M.J., Lesteberg, K.E., Palmer, B.E., Maloney, J.P., Janssen, W.J., Mould, K.J., Beckham, J.D., et al. (2022). SARS-CoV-2 infection relaxes peripheral B cell tolerance. *J. Exp. Med.* 219, e20212553. <https://doi.org/10.1084/jem.20212553>.
- Corbett, K.S., Gagne, M., Wagner, D.A., O'Connell, S., Narpala, S.R., Flebbe, D.R., Andrew, S.F., Davis, R.L., Flynn, B., Johnston, T.S., et al. (2021). Protection against SARS-CoV-2 Beta variant in mRNA-1273 vaccine-boosted nonhuman primates. *Science* 374, 1343–1353. <https://doi.org/10.1126/science.abc8912>.
- Dangi, T., Sanchez, S., Lew, M.H., Visvabharathy, L., Richner, J., Koralnik, I.J., and Penaloza-MacMaster, P. (2022). Pre-existing immunity modulates responses to mRNA boosters. <https://doi.org/10.1101/2022.06.27.497248>.
- DiPiazza, A.T., Leist, S.R., Abiona, O.M., Moliva, J.I., Werner, A., Minai, M., Nagata, B.M., Bock, K.W., Phung, E., Schäfer, A., et al. (2021). COVID-19 vaccine mRNA-1273 elicits a protective immune profile in mice that is not associated



- with vaccine-enhanced disease upon SARS-CoV-2 challenge. *Immunity* 54, 1869–1882.e6. <https://doi.org/10.1016/j.immuni.2021.06.018>.
- Esposito, D., Mehalko, J., Drew, M., Snead, K., Wall, V., Taylor, T., Frank, P., Denson, J.P., Hong, M., Gulsten, G., et al. (2020). Optimizing high-yield production of SARS-CoV-2 soluble spike trimers for serology assays. *Protein Expr. Purif.* 174, 105686. <https://doi.org/10.1016/j.pep.2020.105686>.
- Gagne, M., Moliva, J.I., Foulds, K.E., Andrew, S.F., Flynn, B.J., Werner, A.P., Wagner, D.A., Teng, I.T., Lin, B.C., Moore, C., et al. (2022). mRNA-1273 or mRNA-Omicron boost in vaccinated macaques elicits similar B cell expansion, neutralizing responses, and protection from Omicron. *Cell* 185, 1556–1571.e18. <https://doi.org/10.1016/j.cell.2022.03.038>.
- Glass, D.R., Tsai, A.G., Oliveria, J.P., Hartmann, F.J., Kimmey, S.C., Calderon, A.A., Borges, L., Glass, M.C., Wagar, L.E., Davis, M.M., and Bendall, S.C. (2020). An integrated multi-omic single-cell atlas of human B cell identity. *Immunity* 53, 217–232.e5. <https://doi.org/10.1016/j.immuni.2020.06.013>.
- Goel, R.R., Painter, M.M., Apostolidis, S.A., Mathew, D., Meng, W., Rosenfeld, A.M., Lundgreen, K.A., Reynaldi, A., Khoury, D.S., Pattekar, A., et al. (2021). mRNA vaccines induce durable immune memory to SARS-CoV-2 and variants of concern. *Science* 374, abm0829. <https://doi.org/10.1126/science.abm0829>.
- Goel, R.R., Painter, M.M., Lundgreen, K.A., Apostolidis, S.A., Baxter, A.E., Giles, J.R., Mathew, D., Pattekar, A., Reynaldi, A., Khoury, D.S., et al. (2022). Efficient recall of Omicron-reactive B cell memory after a third dose of SARS-CoV-2 mRNA vaccine. *Cell* 185, 1875–1887.e8. <https://doi.org/10.1016/j.cell.2022.04.009>.
- Jenks, S.A., Cashman, K.S., Zumaquero, E., Marigorta, U.M., Patel, A.V., Wang, X., Tomar, D., Woodruff, M.C., Simon, Z., Bugrovsky, R., et al. (2018). Distinct effector B cells induced by unregulated toll-like receptor 7 contribute to pathogenic responses in systemic lupus erythematosus. *Immunity* 49, 725–739.e6. <https://doi.org/10.1016/j.immuni.2018.08.015>.
- Kalish, H., Klumpp-Thomas, C., Hunsberger, S., Baus, H.A., Fay, M.P., Siringpong, N., Wang, J., Hicks, J., Mehalko, J., Travers, J., et al. (2021). Undiagnosed SARS-CoV-2 seropositivity during the first 6 months of the COVID-19 pandemic in the United States. *Sci. Transl. Med.* 13, eab3826. <https://doi.org/10.1126/scitranslmed.ab3826>.
- Kardava, L., Rachmaninoff, N., Lau, W.W., Buckner, C.M., Trihemasava, K., Blazkova, J., Lopes de Assis, F., Wang, W., Zhang, X., Wang, Y., et al. (2022). Early human B cell signatures of the primary antibody response to mRNA vaccination. *Proc. Natl. Acad. Sci. USA* 119, e2204607119. <https://doi.org/10.1073/pnas.2204607119>.
- Kardava, L., Sohn, H., Youn, C., Austin, J.W., Wang, W., Buckner, C.M., Justement, J.S., Melson, V.A., Roth, G.E., Hand, M.A., et al. (2018). IgG3 regulates tissue-like memory B cells in HIV-infected individuals. *Nat. Immunol.* 19, 1001–1012. <https://doi.org/10.1038/s41590-018-0180-5>.
- Kotaki, R., Adachi, Y., Moriyama, S., Onodera, T., Fukushi, S., Nagakura, T., Tonouchi, K., Terahara, K., Sun, L., Takano, T., et al. (2022). SARS-CoV-2 Omicron-neutralizing memory B cells are elicited by two doses of BNT162b2 mRNA vaccine. *Sci. Immunol.* 7, eabn8590. <https://doi.org/10.1126/sciimmunol.abn8590>.
- Laidlaw, B.J., and Ellebedy, A.H. (2022). The germinal centre B cell response to SARS-CoV-2. *Nat. Rev. Immunol.* 22, 7–18. <https://doi.org/10.1038/s41577-021-00657-1>.
- Mehalko, J., Drew, M., Snead, K., Denson, J.P., Wall, V., Taylor, T., Sadtler, K., Messing, S., Gillette, W., and Esposito, D. (2021). Improved production of SARS-CoV-2 spike receptor-binding domain (RBD) for serology assays. *Protein Expr. Purif.* 179, 105802. <https://doi.org/10.1016/j.pep.2020.105802>.
- Mesin, L., Schiepers, A., Ersching, J., Barbulescu, A., Cavazzoni, C.B., Angelini, A., Okada, T., Kurosaki, T., and Victora, G.D. (2020). Restricted clonality and limited germinal center reentry characterize memory B cell reactivation by boosting. *Cell* 180, 92–106.e11. <https://doi.org/10.1016/j.cell.2019.11.032>.
- Muecksch, F., Wang, Z., Cho, A., Gaebler, C., Ben Tanfous, T., DaSilva, J., Bednarski, E., Ramos, V., Zong, S., Johnson, B., et al. (2022). Increased memory B cell potency and breadth after a SARS-CoV-2 mRNA boost. *Nature* 607, 128–134. <https://doi.org/10.1038/s41586-022-04778-y>.
- Naldini, L., Blömer, U., Gage, F.H., Trono, D., and Verma, I.M. (1996). Efficient transfer, integration, and sustained long-term expression of the transgene in adult rat brains injected with a lentiviral vector. *Proc. Natl. Acad. Sci. USA* 93, 11382–11388. <https://doi.org/10.1073/pnas.93.21.11382>.
- Nicolas, A., Sannier, G., Dubé, M., Nayrac, M., Painter, M.M., Goel, R.R., Laporte, M., Medjahed, H., Williams, J.C., Brassard, N., et al. (2022). A long interval between priming and boosting SARS-CoV-2 mRNA vaccine doses enhances B cell responses with limited impact on T cell immunity. *iScience*. <https://doi.org/10.2139/ssrn.4189020>.
- Packard, T.A., and Cambier, J.C. (2013). B lymphocyte antigen receptor signaling: initiation, amplification, and regulation. *F1000Prime Rep.* 5, 40. <https://doi.org/10.12703/P5-40>.
- Payne, R.P., Longet, S., Austin, J.A., Skelly, D.T., Dejnirattisai, W., Adele, S., Meardon, N., Faustini, S., Al-Taei, S., Moore, S.C., et al. (2021). Immunogenicity of standard and extended dosing intervals of BNT162b2 mRNA vaccine. *Cell* 184, 5699–5714.e11. <https://doi.org/10.1016/j.cell.2021.10.011>.
- Polack, F.P., Thomas, S.J., Kitchin, N., Absalon, J., Gurtman, A., Lockhart, S., Perez, J.L., Pérez Marc, G., Moreira, E.D., Zerbini, C., et al. (2020). Safety and efficacy of the BNT162b2 mRNA Covid-19 vaccine. *N. Engl. J. Med.* 383, 2603–2615. <https://doi.org/10.1056/NEJMoa2034577>.
- Purtha, W.E., Tedder, T.F., Johnson, S., Bhattacharya, D., and Diamond, M.S. (2011). Memory B cells, but not long-lived plasma cells, possess antigen specificities for viral escape mutants. *J. Exp. Med.* 208, 2599–2606. <https://doi.org/10.1084/jem.20110740>.
- Reynolds, C.J., Pade, C., Gibbons, J.M., Otter, A.D., Lin, K.M., Muñoz Sandoval, D., Pieper, F.P., Butler, D.K., Liu, S., Joy, G., et al. (2022). Immune boosting by B.1.1.529 (Omicron) depends on previous SARS-CoV-2 exposure. *Science* 377, eabq1841. <https://doi.org/10.1126/science.abq1841>.
- Rodda, L.B., Morawski, P.A., Pruner, K.B., Fahning, M.L., Howard, C.A., Franko, N., Logue, J., Eggenberger, J., Stokes, C., Golez, I., et al. (2022). Imprinted SARS-CoV-2-specific memory lymphocytes define hybrid immunity. *Cell* 185, 1588–1601.e14. <https://doi.org/10.1016/j.cell.2022.03.018>.
- Schrezenmeier, E., Weißenberg, S.Y., Stefanski, A.L., Szelinski, F., Wiedemann, A., Lino, A.C., and Dörner, T. (2019). Postactivated B cells in systemic lupus erythematosus: update on translational aspects and therapeutic considerations. *Curr. Opin. Rheumatol.* 31, 175–184. <https://doi.org/10.1097/BOR.0000000000000576>.
- Sette, A., and Crotty, S. (2021). Adaptive immunity to SARS-CoV-2 and COVID-19. *Cell* 184, 861–880. <https://doi.org/10.1016/j.cell.2021.01.007>.
- Sigal, A. (2022). Milder disease with Omicron: is it the virus or the pre-existing immunity? *Nat. Rev. Immunol.* 22, 69–71. <https://doi.org/10.1038/s41577-022-00678-4>.
- Teng, I.T., Nazzari, A.F., Choe, M., Liu, T., Oliveira de Souza, M., Petrova, Y., Tsybovsky, Y., Wang, S., Zhang, B., Artamonov, M., et al. (2022). Molecular Probes of spike ectodomain and its subdomains for SARS-CoV-2 variants, alpha through Omicron. *PLoS One* 17, e0268767. <https://doi.org/10.1371/journal.pone.0268767>.
- Woodruff, M.C., Ramonell, R.P., Nguyen, D.C., Cashman, K.S., Saini, A.S., Haddad, N.S., Ley, A.M., Kyu, S., Howell, J.C., Ozturk, T., et al. (2020). Extra-follicular B cell responses correlate with neutralizing antibodies and morbidity in COVID-19. *Nat. Immunol.* 21, 1506–1516. <https://doi.org/10.1038/s41590-020-00814-z>.
- Zhang, Y., Meyer-Hermann, M., George, L.A., Figge, M.T., Khan, M., Goodall, M., Young, S.P., Reynolds, A., Falciani, F., Waisman, A., et al. (2013). Germinal center B cells govern their own fate via antibody feedback. *J. Exp. Med.* 210, 457–464. <https://doi.org/10.1084/jem.20120150>.

STAR★METHODS

KEY RESOURCES TABLE

REAGENT or RESOURCE	SOURCE	IDENTIFIER
<b>Antibodies</b>		
Mouse anti-human CD45 BUV805	BD Biosciences	Cat#612891; RRID: AB_2870179
Mouse anti-human CD19 BV650	BD Biosciences	Cat# 563226; RRID: AB_2744313
Mouse anti-human CD20 APC-H7	BD Biosciences	Cat#560734; RRID: AB_1727449
Mouse anti-human CD10 BV510	BD Biosciences	Cat#563032; RRID: AB_2737964
Mouse anti-human IgG PE-Cy7	BD Biosciences	Cat#561298; RRID: AB_10611712
Mouse anti-human CD11c BUV395	BD Biosciences	Cat#563787; RRID: AB_2744274
Mouse anti-human CD3 BV570	Biolegend	Cat#300436; RRID: AB_2562124
Mouse anti-human IgD BV605	Biolegend	Cat#348232; RRID: AB_2563337
Mouse anti-human IgM BV711	Biolegend	Cat#314540; RRID: AB_2687215
Mouse anti-human CD27 BV785	Biolegend	Cat#302832; RRID: AB_2562674
Mouse anti-human CD21 PE/Dazzle594	Biolegend	Cat#354922; RRID: AB_2739536
Mouse anti-human CD38 APC/Fire810	Biolegend	Cat#356644; RRID: AB_2860936
Mouse anti-human CD71 Alexa Fluor 700	Biolegend	Cat#334130; RRID: AB_2888770
Mouse anti-human IgA VioBlue	Miltenyi Biotec	Cat#130-113-479; RRID: AB_2726166
Mouse anti-Syk (pY348) Alexa Fluor 488	BD Biosciences	Cat#560081; RRID: AB_1645376
Mouse anti-PLC-g2 (pY759) Alexa Fluor 647	BD Biosciences	Cat#558498; RRID: AB_647139
AffiniPure F(ab') <sub>2</sub> fragment goat anti-human IgA/IgG/IgM	Jackson ImmunoResearch Laboratories	Cat#109-006-064; RRID: AB_2337548
Goat anti-human IgG (H+L) Cross Absorbed secondary antibody, HRP	ThermoFisher	Cat#A18811; RRID: AB_2535588
Recombinant Human Anti-Nucleocapsid IgG B1-182	ThermoFisher	Cat#MA5-35942; RRID: AB_2866554
A19-46.1	Vaccine Research Center, NIH	N/A
A19-61.1	Vaccine Research Center, NIH	N/A
COV2-2196	Vaccine Research Center, NIH	N/A
LY-CoV1404	Lilly USA, LLC	Bebtelovimab
<b>Biological samples</b>		
Human peripheral blood samples from SARS-CoV-2 mRNA vaccine recipients	Collected at Clinical Center, NIH	N/A
<b>Chemicals, peptides, and recombinant proteins</b>		
SARS-CoV-2 S1 B.1	Biolegend	Cat#793806
SARS-CoV-2 S-2P B.1	AcroBiosystem	Cat#SPN-C82E9
SARS-CoV-2 RBD B.1	AcroBiosystems	Cat#SPD-C82E9
SARS-CoV-2 RBD BA.1	AcroBiosystems	Cat#SPD-C82E4
SARS-CoV2-B.1-NTD-AVI-biotin	Vaccine Research Center, NIH (Teng et al., 2022)	N/A
SARS-CoV2-BA.1-NTD-AVI-biotin	Vaccine Research Center, NIH (Teng et al., 2022)	N/A
Streptavidin PE	ThermoFisher	Cat#S21388
Streptavidin APC	ThermoFisher	Cat#S32362
Streptavidin PE-Cy5.5	ThermoFisher	Cat#SA1018
Streptavidin Alexa Fluor 488	ThermoFisher	Cat#S32354
Streptavidin BV421	Biolegend	Cat#405225
Streptavidin BUV615	BD Biosciences	Cat#613013

(Continued on next page)

**Continued**

REAGENT or RESOURCE	SOURCE	IDENTIFIER
Zombie NIR Fixable Viability Dye	Biolegend	Cat#423105
CellTrace CFSE Cell Proliferation Kit	ThermoFisher	Cat#C34554
R848 (Resiquimod)	InvivoGen	Cat#tlrl-r848-5
Human Recombinant IL-2	StemCell Technologies	Cat#78036.2
1-Step Ultra TMB-ELISA Substrate Solution	ThermoFisher	Cat#34029
Stop Solution	ThermoFisher	Cat#SS04
Tween 20	Sigma Aldrich	Cat#P1379
SARS-CoV-2-Nucleocapsid (N-terminal)	NCI-Frederick Protein Expression Lab	N/A
Pooled Human Serum (collected prior to 2019)	Lonza	Cat#3P-105B
MSD Blocker A	Meso Scale Diagnostics	Cat#R93AA
MSD GOLD Read Buffer B	Meso Scale Diagnostics	Cat#R60AM
MSD Diluent 100	Meso Scale Diagnostics	Cat#R50AA
Lipofectamine 3000 transfection reagent	ThermoFisher	Cat#L3000075
Reporter Gene Assay System	Perkin Elmer	Cat#6066769

**Critical commercial assays**

Human Total IgG CBA Flex Set Bead C6	BD Biosciences	Cat#558679
Human Ig CBA Master Buffer Kit	BD Biosciences	Cat#558683
V-Plex SARS-CoV-2 panel 25 (IgG) kit	Meso Scale Diagnostics	Cat#K15583U

**Deposited data**

Code for mixed-effect model statistical analysis	This paper	<a href="https://doi.org/10.5281/zenodo.7097099">https://doi.org/10.5281/zenodo.7097099</a>
--	------------	---

**Experimental models: Cell lines**

HEK-293T/17	ATCC	Cat#CRL-11268; RRID: CVCL_1926
HEK-293T-ACE2	Michael Farzan and Huihui Mu, Scripps Research	N/A

**Recombinant DNA**

VRC5601: pHR'CMV Luc	(Naldini et al., 1996)	N/A
VRC5602: pCMV ΔR8.2	(Naldini et al., 1996)	N/A
VRC9260: TMPRSS2	Vaccine Research Center, NIH (DiPiazza et al., 2021)	N/A
Spike_SARS-CoV-2 D614G	Vaccine Research Center, NIH (Corbett et al., 2021)	N/A
Spike_SARS-CoV-2 B.1.351	Vaccine Research Center, NIH (Corbett et al., 2021)	N/A
Spike_SARS-CoV-2 B.1.617.2	Vaccine Research Center, NIH (Corbett et al., 2021)	N/A
Spike_SARS-CoV-2 B.1.1.529	Vaccine Research Center, NIH (Gagne et al., 2022)	N/A

**Software and algorithms**

GraphPad Prism v9.4	GraphPad	RRID: SCR_002798
FlowJo v10.8.1	FlowJo	RRID: SCR_008520
Labkey v19.2	Labkey	N/A

**RESOURCE AVAILABILITY**

**Lead contact**

Further information and requests for resources and reagents should be directed to and will be fulfilled by the lead contact, Susan Moir ([smoir@niaid.nih.gov](mailto:smoir@niaid.nih.gov)).

**Materials availability**

This study did not generate new unique reagents.

### Data and code availability

All data reported in this paper will be shared by the lead contact upon request. The original code generated in this study is available at <https://doi.org/10.5281/zenodo.7097099>. Any additional information required to reanalyze the data reported in this paper is available from the [lead contact](#) upon request.

## EXPERIMENTAL MODEL AND SUBJECT DETAILS

### Ethics statement

Participants were enrolled in the Vaccine Responses to SARS-CoV-2 and Other Emerging Infectious Diseases (COVAC) study ([ClinicalTrials.gov](https://clinicaltrials.gov) identifier NCT05078905) at the NIH Clinical Center. The protocol was approved by the NIH Institutional Review Board and written informed consent was obtained from all study subjects.

### Human study subject recruitment, visits, and clinical data

Sixty-six adults who were scheduled to receive their third dose of the Pfizer-BioNTech (BNT162b2) or Moderna (mRNA-1273) mRNA vaccine were recruited to the COVAC study. Blood samples were collected at baseline (day 0) prior to (either on the day of or the day before) vaccination, and on day 30 and day 60 post-vaccination. Eleven subjects had COVID-19 prior to and another eleven after receiving their booster vaccine. Details of demographics, dates of infection, methods of diagnosis, exact visit timepoints, and dates and type of vaccine for the three doses are provided in [Table S1](#) and summarized in [Table 1](#). Forty-four subjects remained uninfected throughout the study period, verified by serum nucleocapsid antibody testing by the Bio-Rad Platelia and a second in-house assay described below.

## METHOD DETAILS

### Blood sample collection, processing, and storage

PBMCs were isolated by Ficoll density gradient centrifugation from whole blood collected in ethylenediaminetetraacetic acid Vacutainer tubes. Cells were frozen at  $-80^{\circ}\text{C}$  and stored in liquid nitrogen. Serum was isolated by centrifugation of clotted whole blood collected in serum separation transport Vacutainer tubes and stored at  $-80^{\circ}\text{C}$ .

### In vitro differentiation of memory B cells into antibody-secreting cells

PBMCs were thawed, seeded at  $1 \times 10^6$  per ml in complete media (RPMI containing 25mM Hepes and L-glutamine + 10% FCS + 1% Pen/Strep) and stimulated with 1000 U/ml recombinant human IL-2 (StemCell Technologies) and 2.5  $\mu\text{g/ml}$  R848 (Invivogen) for 7 days at  $37^{\circ}\text{C}$ . On day 4, half the media was removed and replaced with fresh media containing 1X IL-2/R848. Day 7 culture supernatants were collected, spun down to remove cellular debris, assayed for total IgG concentration, and stored at  $-80^{\circ}\text{C}$ . Total IgG was measured by cytometric bead array (CBA) assay (BD Biosciences) using a FACS Lyric instrument (BD Biosciences), according to the manufacturer's instructions. Data were analyzed using BD FACSuite software v1.2.1.5657 (BD Biosciences).

### Serum and culture supernatant antibody titers

Serum samples were heat-inactivated at  $56^{\circ}\text{C}$  for 60 minutes. A 10-plex IgG spike-binding assay was performed on serum and culture supernatant samples with an electrochemiluminescence immunoassay analyzer (ECLIA) developed by Meso Scale Discovery (MSD), as previously described ([Kardava et al., 2022](#)), with the following modification. The assays were performed using the MSD V-PLEX SARS-CoV-2 panel 25 kit. The in-house serum nucleocapsid antibody testing was performed using an enzyme-linked immunosorbent assay as previously described ([Kalish et al., 2021](#)), with the following adjustments. Nucleocapsid proteins were synthesized as described ([Esposito et al., 2020](#); [Mehalko et al., 2021](#)), and longitudinal quality control and assay stability was ensured by the inclusion of recombinant human antibodies on each plate (anti-nucleocapsid IgG from ThermoFisher).

### Lentiviral pseudovirus neutralization

Heat-inactivated serum samples were assayed for SARS-CoV-2 neutralization with a lentiviral pseudovirus-based assay and reported as reciprocal 50% inhibitory dilution ( $\text{ID}_{50}$ ) with a value of 20 plotted for samples that did not neutralize, as previously described ([Gagne et al., 2022](#)).

### Biotinylated NTD proteins

The NTD subunit of the spike protein of WA-1 strain (referred to as B.1 in this study) and BA.1 variant were cloned, expressed and biotinylated as previously described ([Teng et al., 2022](#)).

### Spike-binding B cells

A 21-color panel was developed to phenotype B-cell populations and identify spike-binding B cells among PBMCs by spectral flow cytometry ([Table S7](#)). The biotinylated spike proteins were tetramerized with fluorescently labeled streptavidin (SA) at a molar ratio of 4:1 as described previously ([Kardava et al., 2022](#)) with following modifications: S1-B.1 was conjugated with

SA-R-Phycoerythrin (PE), RBD-B.1 with SA-BV421, RBD-BA.1 with SA-Allophycocyanin (APC), NTD-B.1 with SA-Alexa Fluor 488, NTD-BA.1 with SA-BUV615 and S-2P-B.1 with SA-PE-Cy5.5. Cryopreserved PBMCs were thawed, and  $3 \times 10^6$  cells were stained with Zombie NIR Fixable Viability Dye at room temperature for 10 minutes, followed by staining with a cocktail containing 14 monoclonal antibodies (mAbs) and 6 fluorochrome-conjugated spike proteins in staining buffer (2% FBS/PBS) supplemented with Brilliant Stain Buffer Plus (BD Biosciences) at 4°C for 30 minutes. The stained cells were fixed (Lysing Solution, BD Biosciences) and acquired on an Aurora spectral cytometer using SpectroFlo Software v3.0.1 (Cytek Biosciences) and analyzed using FlowJo v10 (BD Biosciences).

### Proliferation assay

PBMCs resuspended in PBS were labeled with 0.5  $\mu\text{M}$  CFSE (CellTrace CFSE cell proliferation kit, ThermoFisher) at room temperature for 8 minutes, followed by addition of RPMI 1640-10% FBS and extensive washing as described (Kardava et al., 2018). The cells were then cultured with 2.5  $\mu\text{g}/\text{ml}$  R848 and 1000 U/ml recombinant human IL-2 for 4 days at  $1 \times 10^6$  cells per well of a 48-well flat-bottom plate. The cells were collected and stained with mAbs against CD19, CD20, CD3, CD27, CD21, IgD, CD38, and fluorochrome-conjugated spike proteins RBD-B.1 and S1-B.1, fixed (Lysing Solution, BD Biosciences), permeabilized (Permeabilizing Solution 2; BD Biosciences) and stained with mAbs against IgG, IgA, IgM. The cells were acquired on an Aurora cytometer and the effect of stimulation on cell division was evaluated by analysis using FlowJo v10. The division index, a measure of the overall proliferative response, is the average number of divisions undergone per cell in the total population, including cells that have not undergone division.

### Phosphorylation assay

PBMCs stained with mAbs against CD19, CD20, CD3, CD27, CD21, IgD, and BV421-conjugated RBD-B.1 were resuspended in RPMI 1640-10% FBS and stimulated with anti-BCR as described previously (Kardava et al., 2018), with the following modifications. The cells were stimulated at 37°C for 2 min with 10  $\mu\text{g}/\text{ml}$  goat F(ab')<sub>2</sub> anti-human IgA/G/M (# 109-006-064 from Jackson ImmunoResearch Laboratories). For the detection of phosphorylated signaling intermediates, cells were fixed and permeabilized using BD Cytotfix and Phosflow Perm/Wash buffers (BD Biosciences) and stained with Alexa Fluor 488-conjugated mAb against phosphorylated Syk (p-Y348) and Alexa Fluor 647-conjugated mAb against phosphorylated PLC $\gamma$ 2 (p-Y759) (BD Biosciences). The samples were acquired on an Aurora cytometer and analysis was performed by FlowJo V10.

## QUANTIFICATION AND STATISTICAL ANALYSIS

Two different sets of analyses were performed. The first set consisted of non-parametric comparisons: testing between groups and between timepoints within groups were performed by two-tailed non-parametric Mann-Whitney or Wilcoxon signed rank test respectively using Prism 9.4 (GraphPad) software. Comparisons between three timepoints were first performed by the Friedman test and if significant, pairwise Wilcoxon signed rank testing was then performed. Comparisons between the three groups were first performed by the Kruskal-Wallis test and if significant, pairwise Mann-Whitney testing was then performed. Associations between continuous variables were evaluated by Spearman rank order correlation. Comparisons between the three groups for gender and vaccine source were performed by the Fisher's exact test. No adjustments for multiple comparisons were made for these analyses. Only significant *P* values (<0.05) are shown. Unless otherwise stated, the *N* for all data presented were 44 in the uninfected group and 11 each in the prior-infected and post-infected groups.

The second set consisted of parametric analyses using a linear mixed model regression applied to the base 10 logarithm of each outcome. The mixed model included fixed effects for group (uninfected, prior-infected, and post-infected), days (treated as a factor variable), and a group by time interaction, and allowed participants to have different intercepts. The fixed effects component of the model is specified by

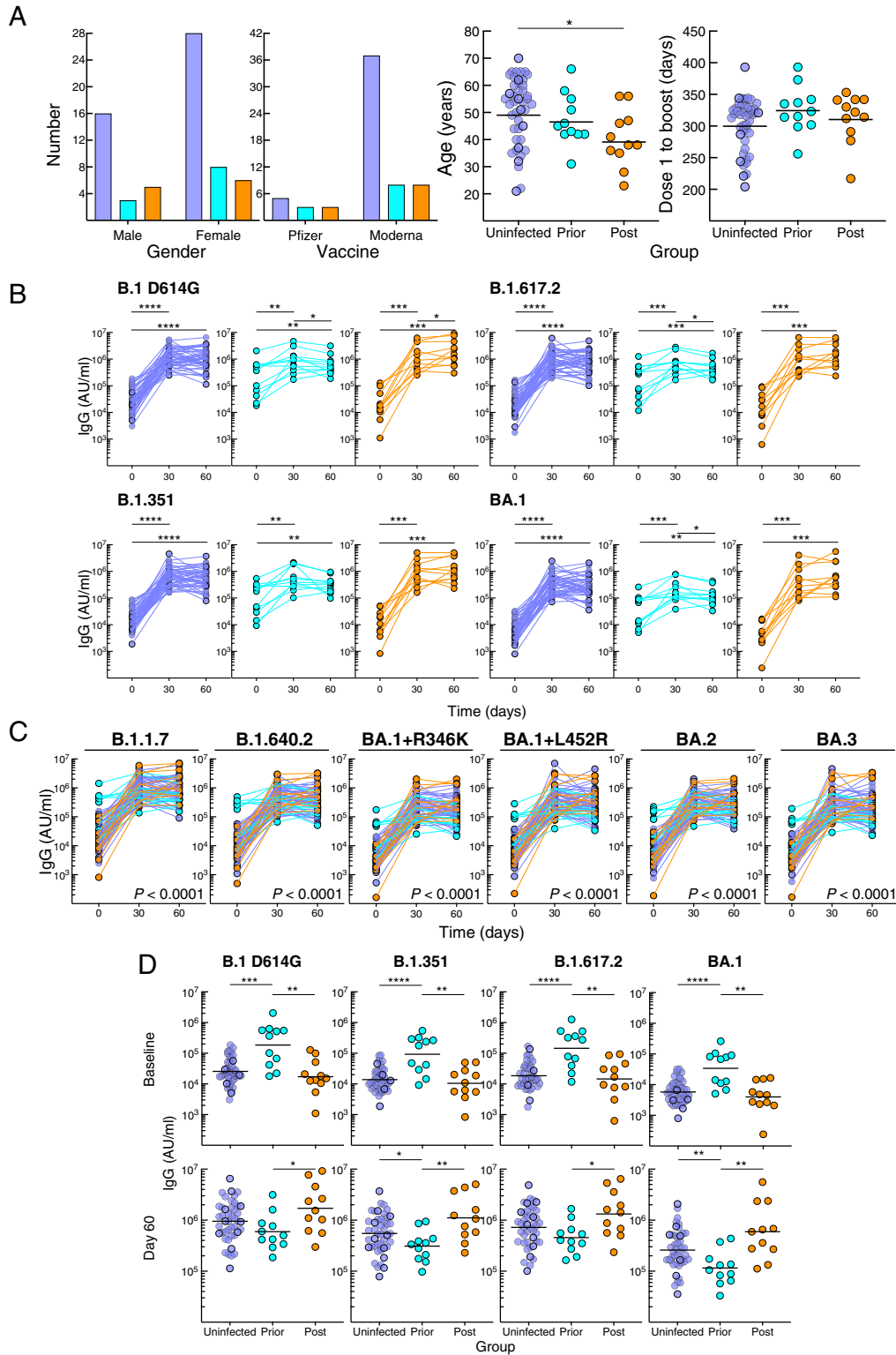
$$E(y) = \beta_0 + \beta_1 I(\text{group} = \text{prior infected}) + \beta_2 I(\text{group} = \text{post infected}) + \beta_3 I(\text{day} = 30) + \beta_4 I(\text{day} = 60) \\ + \beta_5 I(\text{group} = \text{prior infected}) I(\text{day} = 30) + \beta_6 I(\text{group} = \text{prior infected}) I(\text{day} = 60) \\ + \beta_7 I(\text{group} = \text{post infected}) I(\text{day} = 30) + \beta_8 I(\text{group} = \text{post infected}) I(\text{day} = 60)$$

Here, *y* is the log-transformed value of the outcome variable for a given subject and *E*(*y*) is the mean value in the given group and day, *I*(*group* = *prior infected*) and *I*(*group* = *post infected*) are indicator variables that the subject was prior-infected and that the subject was post-infected, *I*(*day* = 30) and *I*(*day* = 60) are indicators of day 30 and day 60, and the other terms are products of group and day indicators representing group by day interactions. In this parametrization,  $\beta_0$  is the mean in the reference group (uninfected) on day 0. The random effects component of the model included a subject-specific deviation from the average value in the corresponding group and day. We first simultaneously tested the group by time interaction terms to assess whether the patterns over time differed across groups. If there was a significant group by time interaction, we made pairwise comparisons by eliminating a group or day and re-running the above model. For example, for pairwise comparisons of days 0 and 60, we eliminated day 30 and re-ran the model; for comparisons of uninfected with post-infected, we eliminated the prior-infected group and re-ran the above



model. The mixed model approaches adjusted for the number of variants within a given data type (e.g., flow cytometry) using the Holm sequentially-rejective method. Holm's method with 10 variants multiplies the smallest p-value by 10. Provided that the result is less than 0.05, the second smallest p-value is multiplied by 9. Provided that that result is less than 0.05, the third smallest p-value is multiplied by 8, and so on. It should be noted that, although we formally adjusted only for the number of variants, we effectively incorporated more multiple comparison adjustment by virtue of performing stratified analyses by days and groups only if the group by time interaction was statistically significant. The purpose of those further analyses was to understand the different patterns over time in different groups that were established from the statistically significant group by time interactions.

# Supplemental figures



---

**Figure S1. Demographics and serum antibody response to booster vaccination, related to Figure 1**

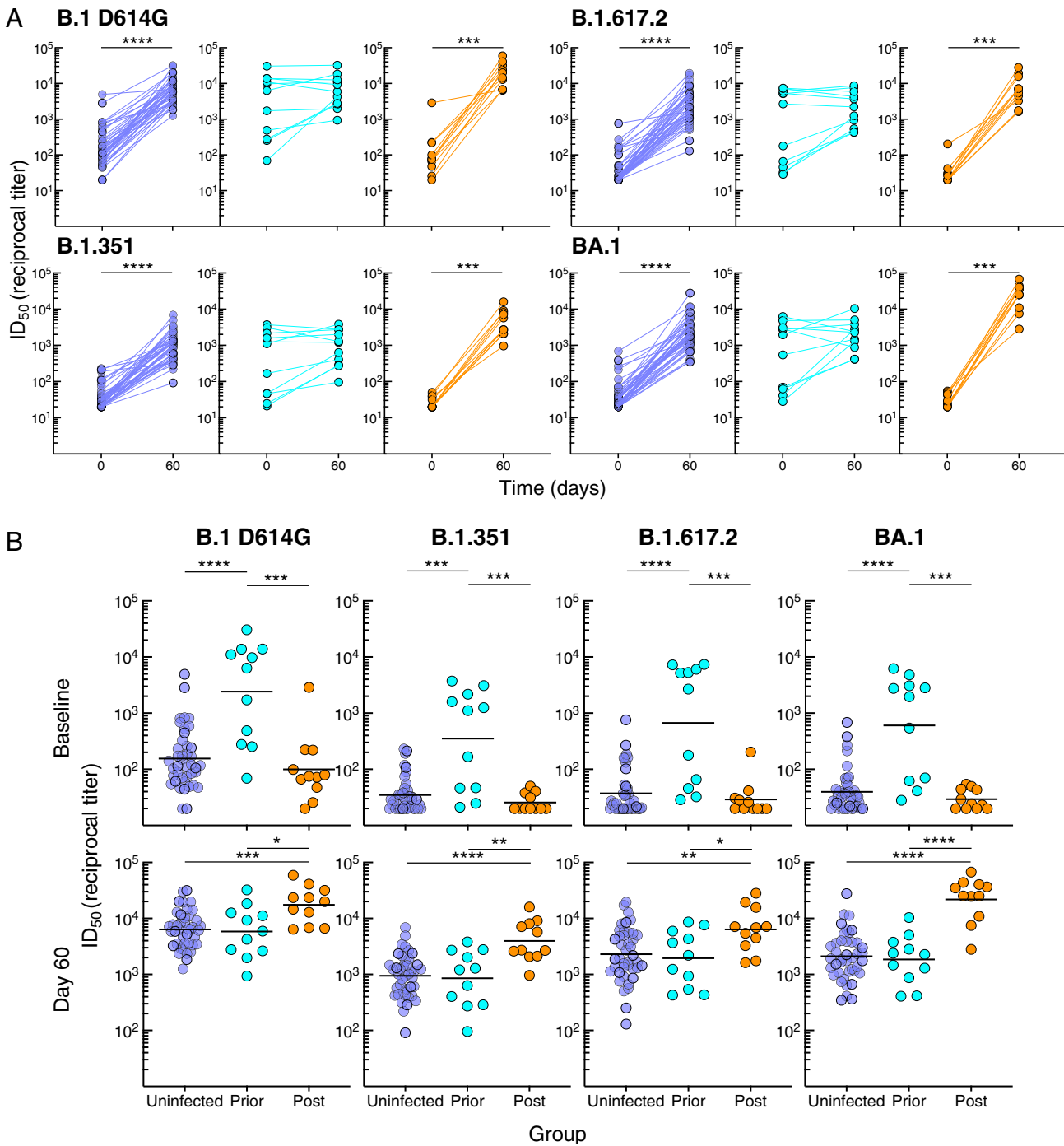
(A) Comparison between the groups for gender, vaccine, age, and interval between dose 2 and booster vaccination; see [Table S1](#) for details.

(B) Serum IgG spike-binding titers in [Figure 1B](#) shown by group.

(C) Serum IgG spike-binding titers for additional variants, expressed as in [Figure 1B](#).

(D) Comparison between the groups at baseline and day 60 of serum IgG spike-binding titers in [Figure 1B](#).

Horizontal lines represent geometrical means and coloring scheme matches groups described in [Figure 1A](#). Statistical analyses by Fisher's exact test (A: two left graphs), Kruskal-Wallis followed by pairwise Mann-Whitney tests (A: two right graphs and D), Friedman followed by pairwise Wilcoxon signed rank tests (B), mixed-effects model (C) or by Wilcoxon signed rank test (E). \* $p \leq 0.05$ , \*\* $p \leq 0.01$ , \*\*\* $p \leq 0.001$ , and \*\*\*\* $p < 0.0001$ .

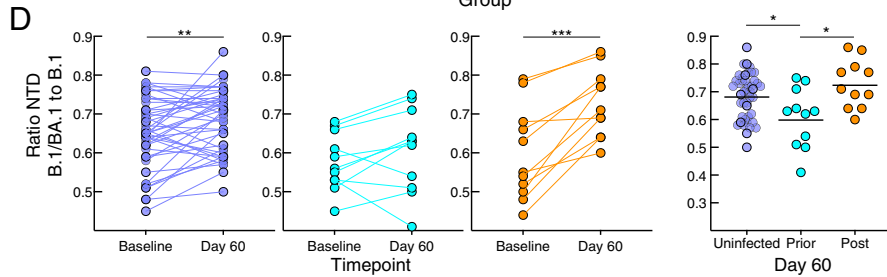
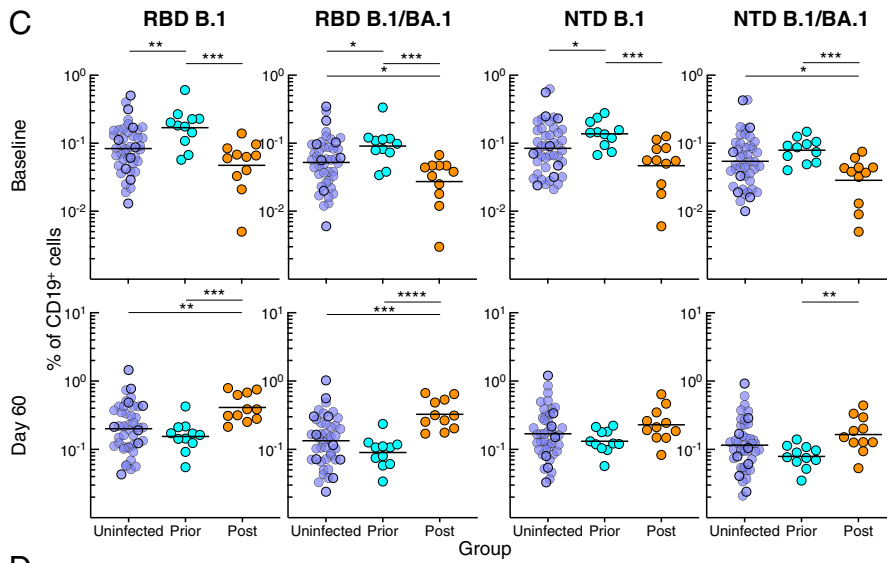
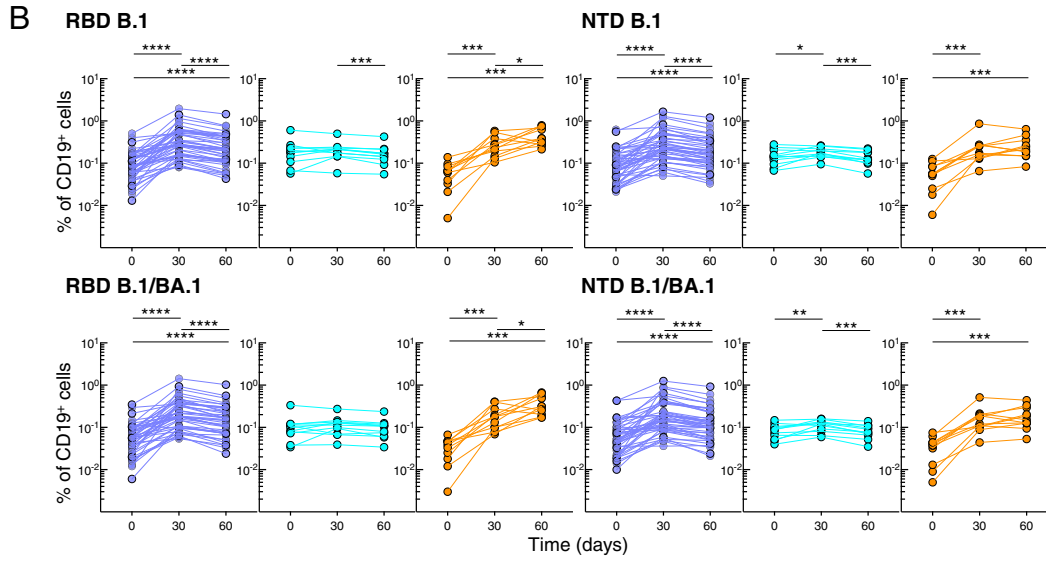
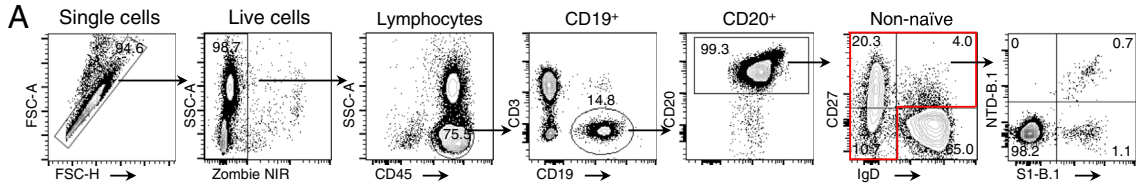


**Figure S2. Serum neutralizing antibody response to booster vaccination, related to Figure 1**

(A) Serum neutralizing titers in Figure 1D shown by group.

(B) Comparison between the groups at baseline and day 60 of serum neutralizing titers in Figure 1D.

Horizontal lines represent geometrical means and coloring scheme matches groups described in Figure 1A. Statistical analyses by Wilcoxon signed rank test (A) or by Kruskal-Wallis followed by pairwise Mann-Whitney tests (B). \* $p \leq 0.05$ , \*\* $p \leq 0.01$ , \*\*\* $p \leq 0.001$ , and \*\*\*\* $p < 0.0001$ .





---

**Figure S3. Spike-binding B cells, related to Figure 2**

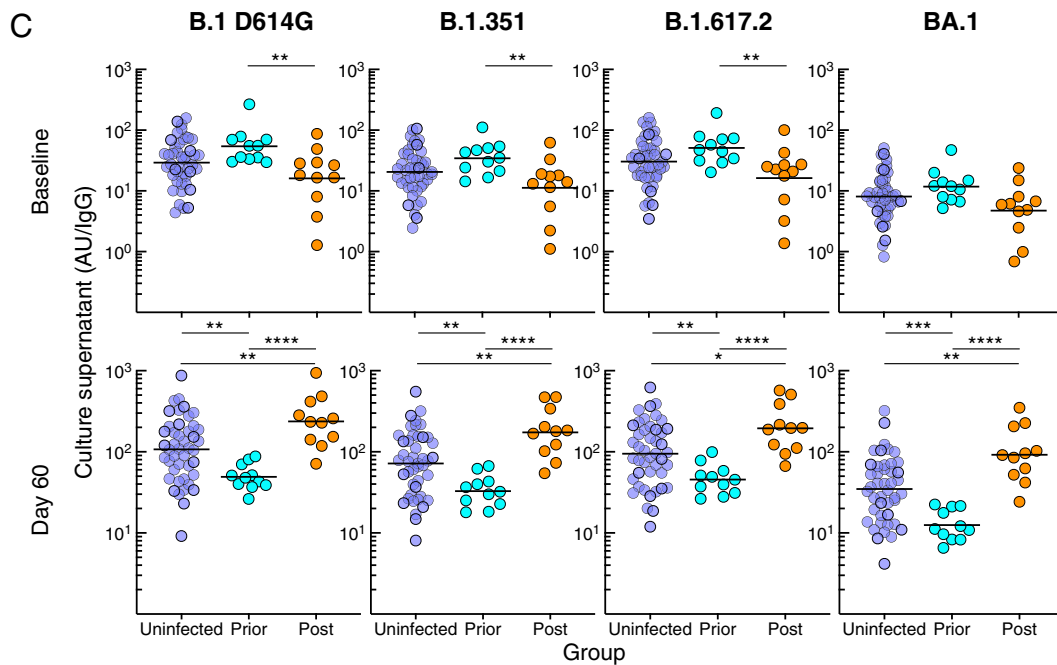
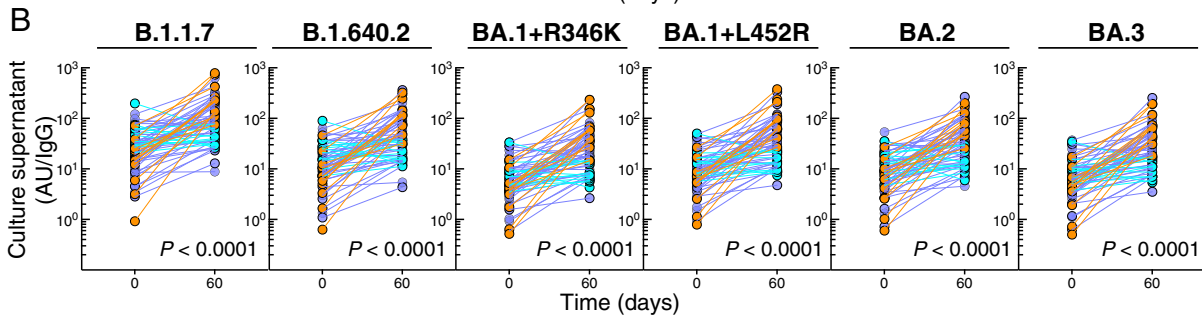
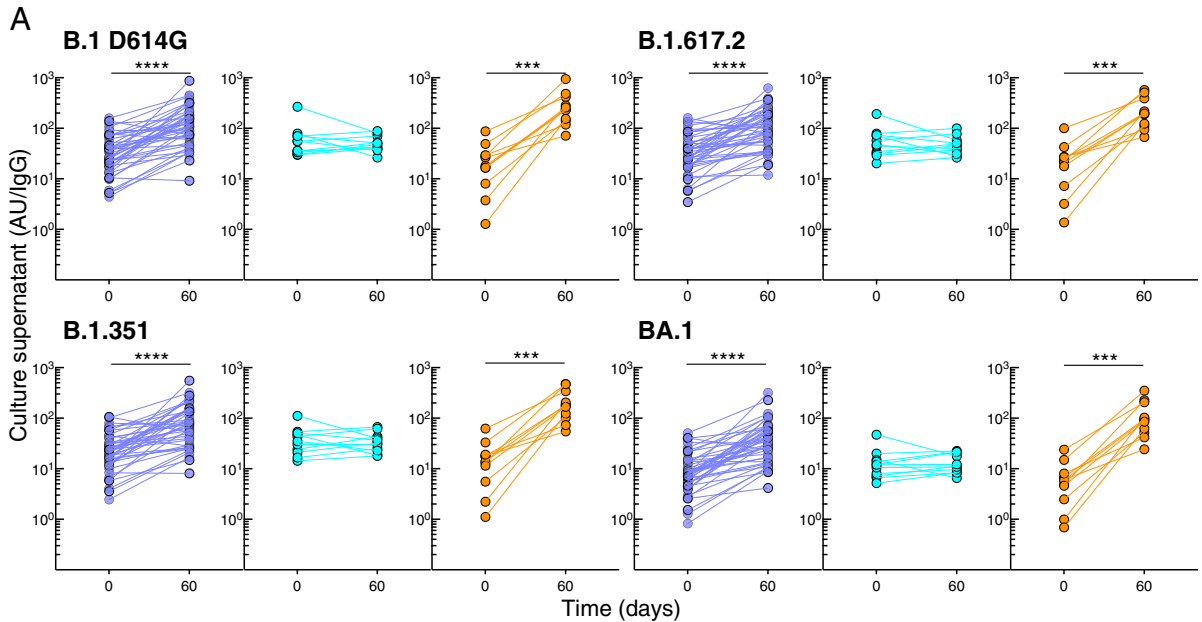
(A) Gating strategy for identifying non-naive B cells; also showing representative binding of B.1 NTD and S1 tetramers.

(B) Frequencies of B.1 and BA.1 RBD and NTD tetramer-binding B cells in Figure 2B shown by group.

(C) Comparison between the groups at baseline and day 60 of frequencies of B.1 and BA.1 RBD and NTD tetramer-binding B cells in Figure 2B.

(D) As in Figure 2D but for NTD.

Horizontal lines represent geometrical means and coloring scheme matches groups described in Figure 1A. Statistical analyses by Friedman followed by pairwise Wilcoxon signed rank tests (B), Kruskal-Wallis followed by pairwise Mann-Whitney tests (C, D right graph) or by Wilcoxon signed rank test (D for baseline versus day 60). \* $p \leq 0.05$ , \*\* $p \leq 0.01$ , \*\*\* $p \leq 0.001$ , and \*\*\*\* $p < 0.0001$ .



(legend on next page)

---

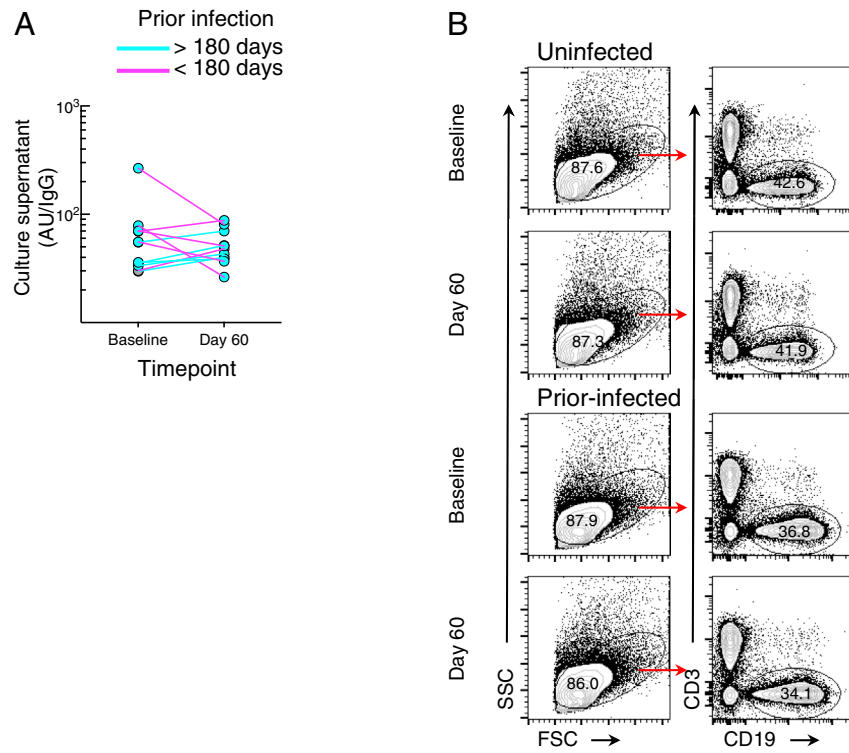
**Figure S4. Spike-binding antibodies secreted from B cells in cultured PBMCs, related to Figure 3**

(A) Secreted IgG spike-binding titers in Figure 3A shown by group.

(B) Secreted IgG spike-binding titers for additional variants, expressed as in Figure 3A.

(C) Comparison between the groups at baseline and day 60 of secreted IgG spike-binding titers in Figure 3A.

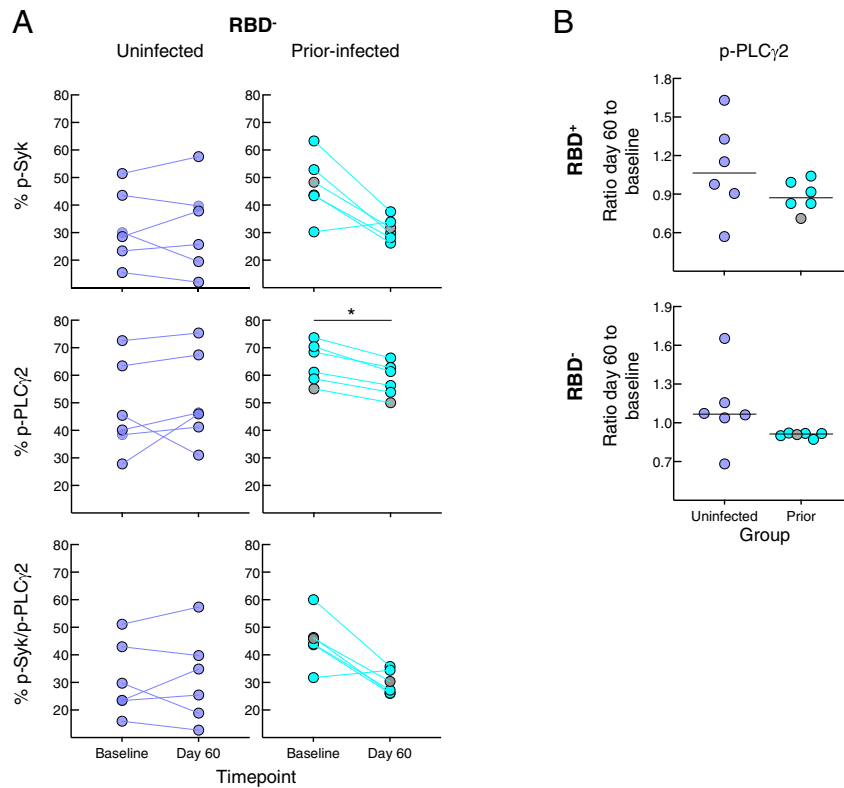
Horizontal lines represent geometrical means and coloring scheme matches groups described in Figure 1A. Statistical analyses by Wilcoxon signed rank test (A), mixed-effects model (B) or by Kruskal-Wallis followed by pairwise Mann-Whitney tests (C). \* $p \leq 0.05$ , \*\* $p \leq 0.01$ , \*\*\* $p \leq 0.001$ , and \*\*\*\* $p < 0.0001$ .



**Figure S5. *In vitro* proliferation studies, related to Figure 4**

(A) Secreted antibodies in Figure S4B for the prior-infected group against B.1 D614G spike shown color-coordinated by time of infection relative to booster vaccination. PBMCs of the six individuals with interval < 180 days were stimulated to evaluate cell division by CFSE dilution.

(B) Gating of live CD19<sup>+</sup> cells after four days in culture.



**Figure S6. *In vitro* BCR signaling studies, related to Figure 5**

(A) As in Figure 5B but for RBD<sup>-</sup> B cells.

(B) As in Figure 5C but for single PLC $\gamma$ 2.

Horizontal lines represent medians and coloring scheme matches groups described in Figure 1A. Gray circles refer to subject 00065 R in Table S1 and Figure S5A. Statistical analyses by Wilcoxon signed rank test (A, for baseline versus day 60), Mann-Whitney test (A for uninfected versus prior-infected, B). \* $p \leq 0.05$ .