

表 NASH の組織学的分類：Brunt分類

Grade (活動性)	脂肪沈着	風船状腫大	炎症
Mild, Grade 1	Mild-moderate (< 33%)	minimal	L : mild-moderate P : none-mild
Moderate, Grade 2	Moderate-severe (> 33%)	present	L : moderate P : mild-moderate
Severe, Grade 3	Moderate-severe (> 66%)	marked	L : severe P : mild-moderate
Stage (進行度)			
1	部分的あるいは広範な Zone 3 の細胞周囲性線維化		
2	Zone 3 の細胞周囲性線維化 + 門脈線維化		
3	線維性架橋形成 (中心静脈間, 門脈 - 中心静脈間)		
4	肝硬変		

- 最近では、脂肪沈着、風船状腫大、炎症を半定量的に評価する NASH activity score (NAS) も用いられ、NAS 5以上がNASHとされる。

消化器病理のみかたのこつ; 羊土社より

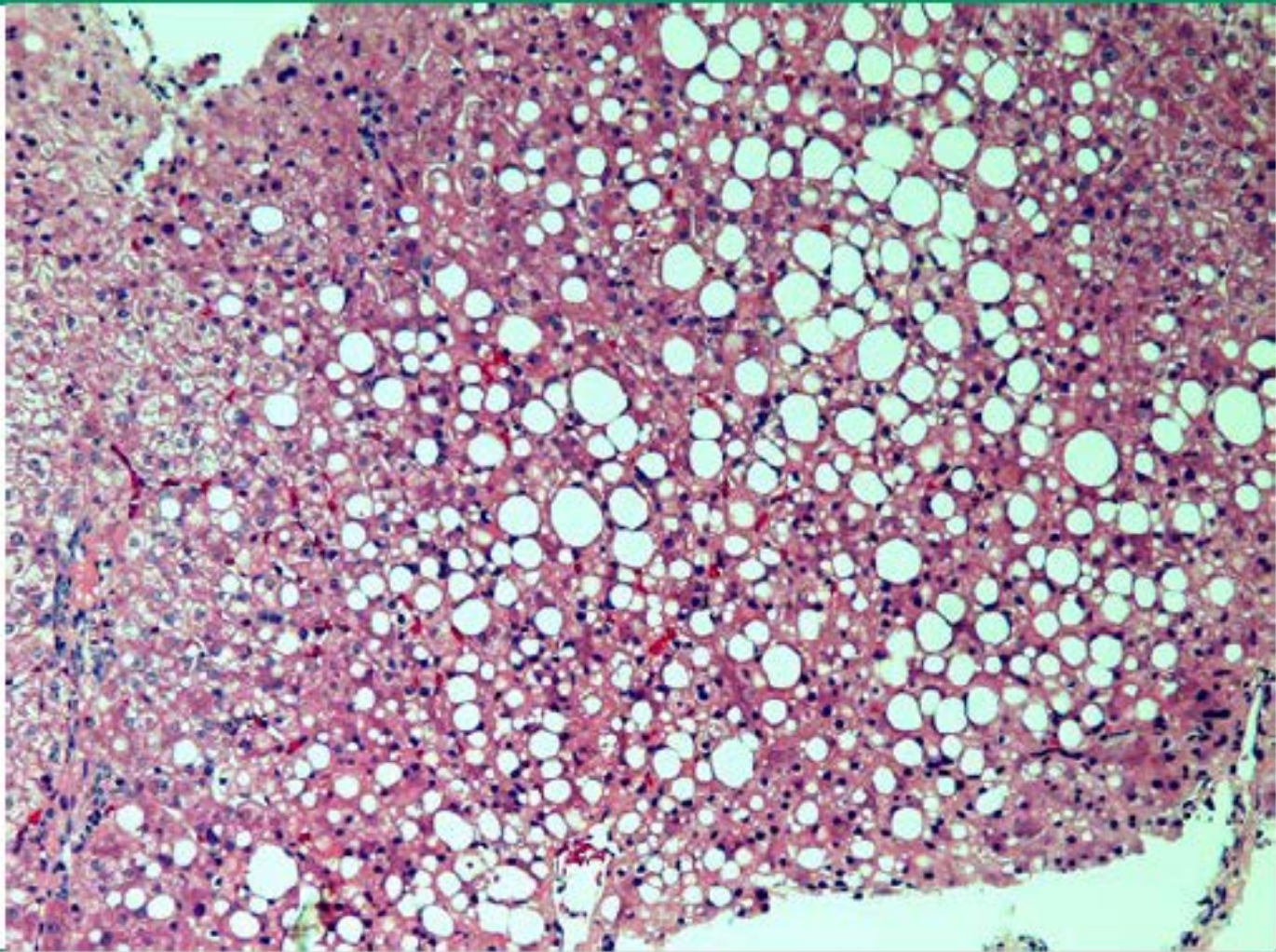
Nonalcoholic fatty liver disease activity score (NAS)

Feature	Points	Criteria
A. Steatosis	0	<5%
	1	5 to 33%
	2	>33 to 66%
	3	>66%
B. Lobular inflammation	0	None
	1	<2 foci per 200X field
	2	2 to 4 foci per 200X field
	3	>4 foci per 200X field
C. Ballooning	0	None
	1	Few ballooning cells
	2	Many cells/prominent ballooning

Graphic 98135 Version 1.0

以下のグラフはUPTODATEより

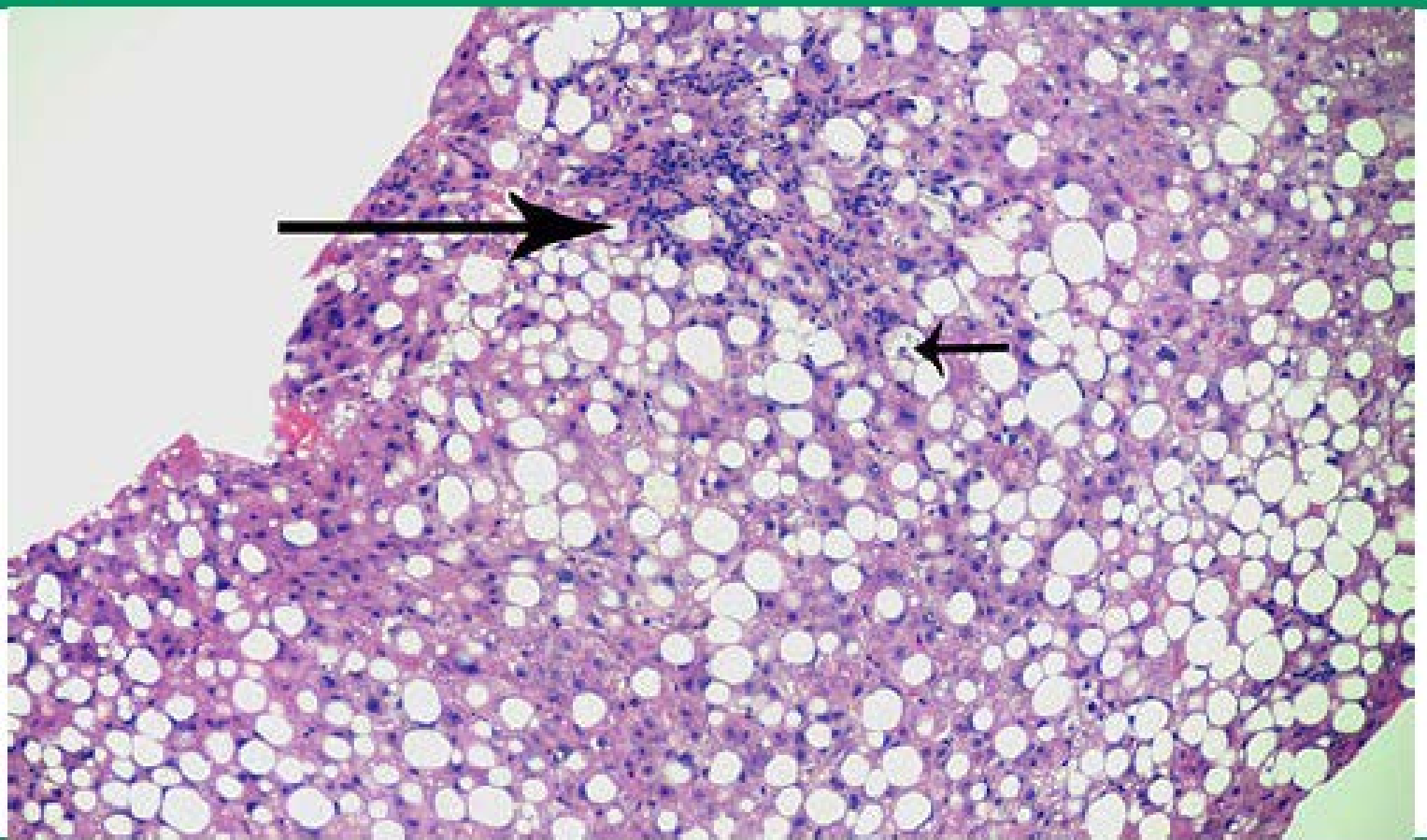
NAFLD activity score: Steatosis score of 2



Steatotic vacuoles occupy approximately 50 percent of the hepatic parenchyma.

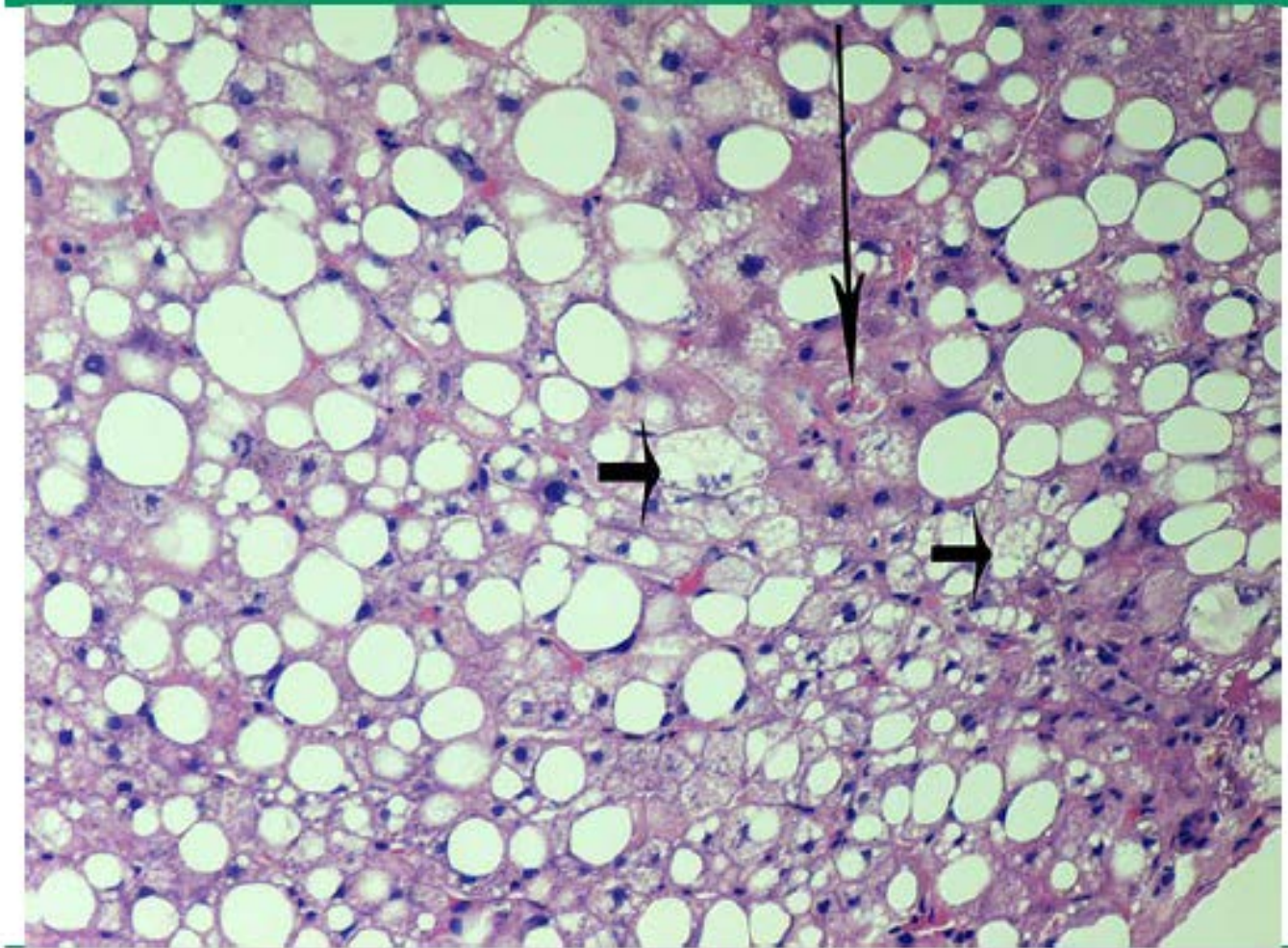
NAFLD: Nonalcoholic fatty liver disease.

NAFLD activity score: Steatosis score of 3 (>66 percent), lobular inflammation score of 2 (2 to 4 foci per 200X field) and ballooning score of 1



The long arrow points to two groups of inflammatory cells, and the short arrow is pointing at

NAFLD activity score: Steatosis score of 3 and ballooning score of 1



The short arrows point to ballooned hepatocytes and the long arrow points to a Mallory-Denk hyaline. No significant inflammation is present. NAS score = 4.

NAFLD: nonalcoholic fatty liver disease; NAS: NAFLD activity score.